

The
Scope
1960





The Scope

1959-60

Pacific High School

Port Orford-Langlois

Cover By Roy Mollier

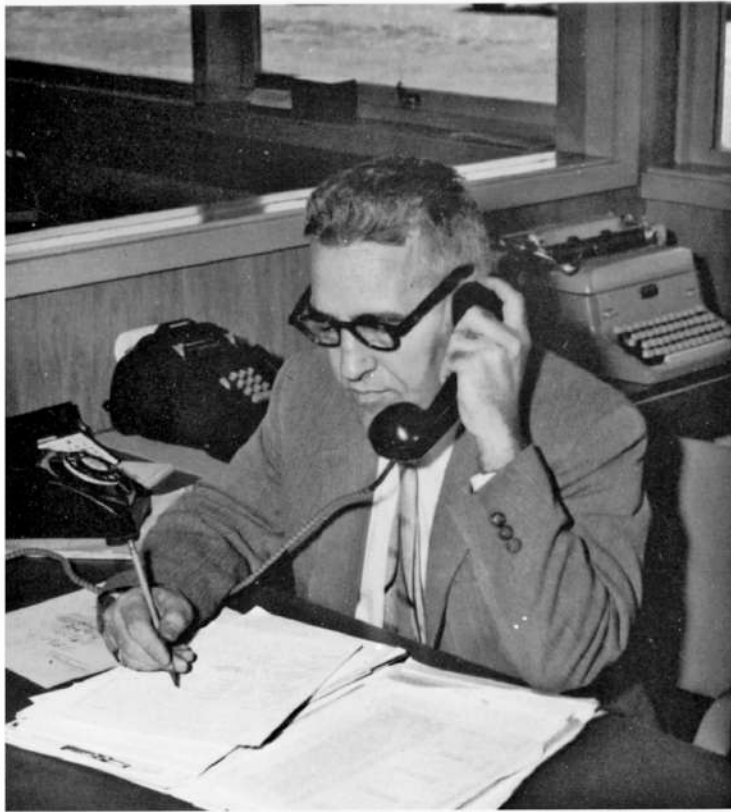


DEDICATION

The students of Pacific High School dedicate the 1960 SCOPE to the patrons of District 2CJ in appreciation of their many services and helps throughout the year. In your hands lies the future of this school and thus the future of its students. We are a growing school. Much has happened during the year recorded here in this book. Much will happen in the years to come. We hope that your interest in Pacific will continue as it has to date, and we hope that you will realize that your efforts are appreciated.

Table of Contents

	<i>Page</i>
<i>Faculty</i>	4
<i>Classes</i>	9
<i>Organizations</i>	35
<i>Sports</i>	43
<i>Activities</i>	63
<i>Student Life</i>	77



JACK RICE
Superintendent

Administration



JOSEPH E. DeMARSH
Principal



ROBERT STOLZ
Guidance Director

School Board



FRONT ROW: Bill Sweet, Mabel Kight, George Steddom, Ray Reinke. BACK ROW: Johnny Mayea, Chairman; Jack Rice, Superintendent; and John Donaldson.



MRS. HELEN SLOCUM
Clerk



MR. HAROLD CAGLE
Driver's Training, Speech,
Biology, Track Coach



MISS KATHLEEN MOYLE
Geography, P. E. , Pep Club,
Rally Squad, G. A. A. , Junior Class
Advisor, Counselor

Faculty

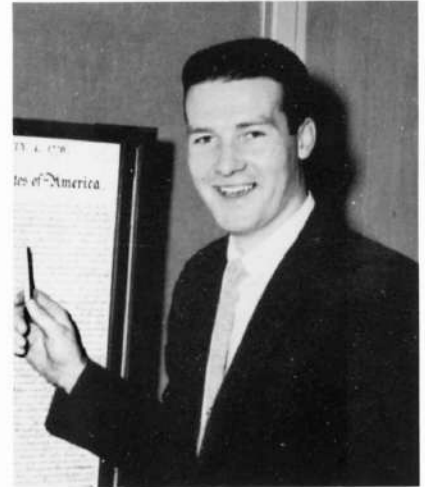
MR. GENE STREIGHT
Vocational Agriculture,
General Shop

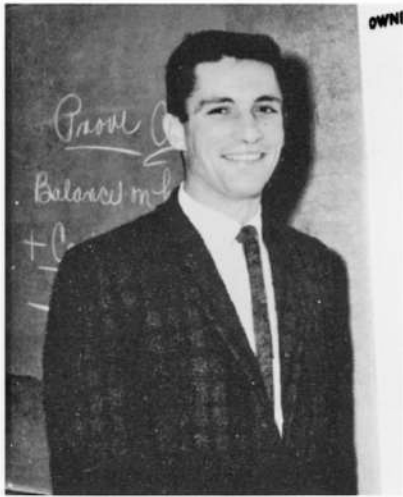


MRS. VERNICE MASTERSON
Latin, World History, Library



MR. ARVIN CRAWFORD
U. S. History, American Problems
Conservation, Wrestling, Football
Coach

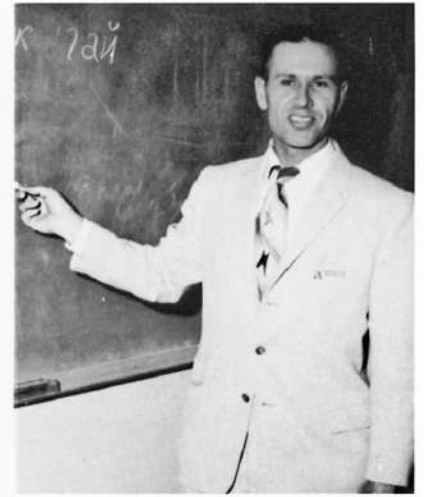




MR. JOHN HERIZA
Bookkeeping, English II,
College Prep, P. E.,
Freshman Basketball and Football
Coach



MISS MARY ANDERSON
Freshman English, Homemaking I, II



MR. PETER KOLIBABA
Journalism, General Science,
Senior Math, Russian

MR. JAMES GREEN
General Math, Geometry, Physics
Chemistry



MRS. EVA ENDEVOLDSON
Shorthand, Typing I, II



MR. JERRY CRANDALL
English I, III, IV





MR. CHARLES JENSEN
Band

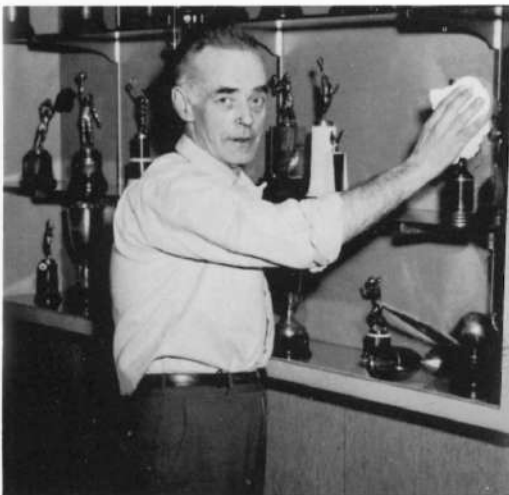


MR. ROBERT STOLTZ
P. E. , Counselling
Athletic Director
Basketball and Baseball
Coach



MRS. BILLY KOLIBABA
Algebra I, II
Introductory College Math

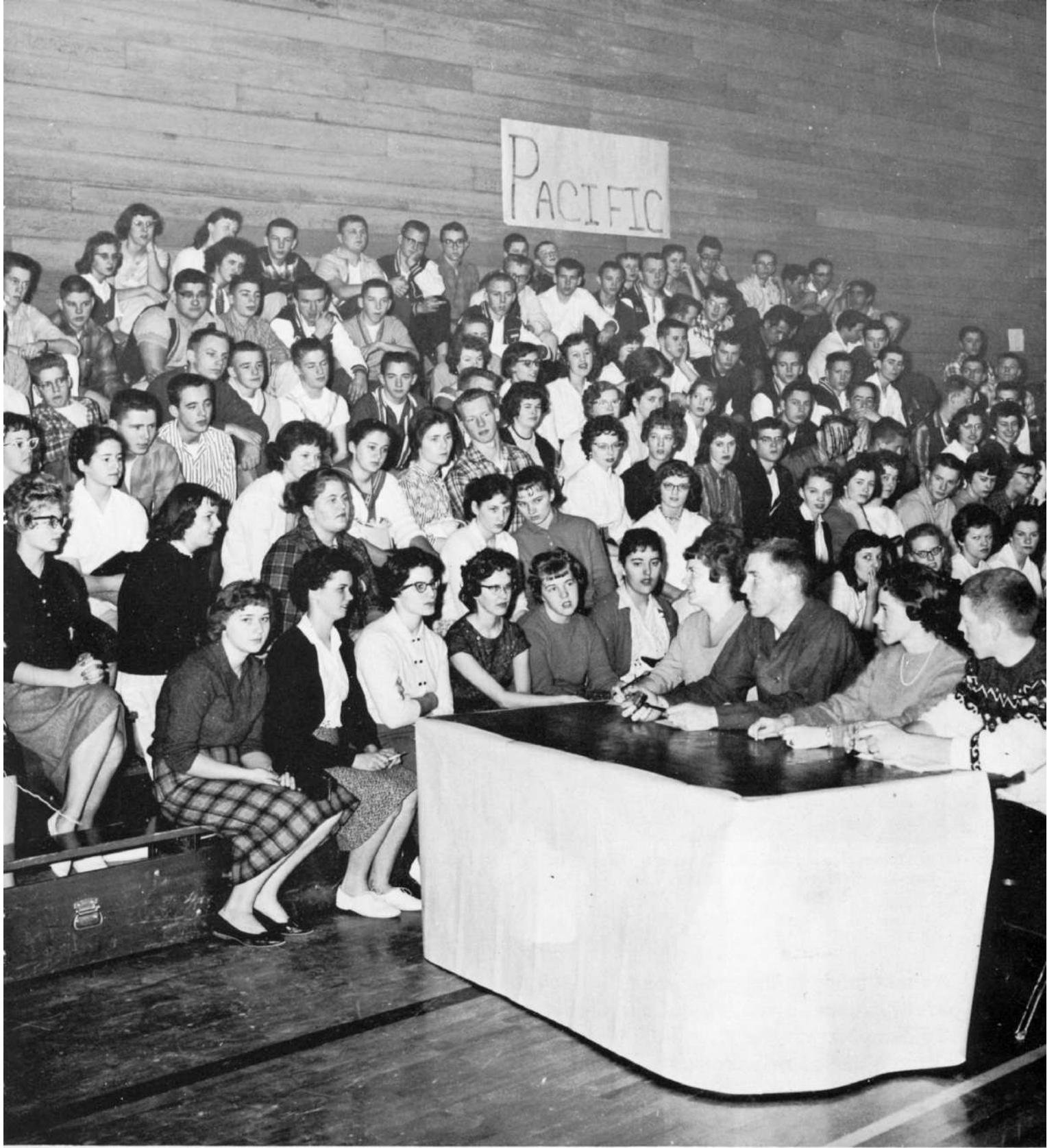
Custodians



MR. EVERETT QUIGLEY



EDWARD DWIRE



Classes

Class of "60"

Seniors



President, Arnold Jackson; Treasurer, Gary Platt; Class Representative, Ben Neff; Vice President, Jon Cox; Secretary, Roy Mollier.

Senior Activities

As testimony to the great year the 1960 Senior Class had at Pacific High School, we hereby present a very few of our accomplishments for the school year 1959-60.

To demonstrate the great differences between upperclassmen and underclassmen we initiated those lowly freshmen and sophomores and thereby made known the respect with which we expected to be treated. The Senior with the best costumed initiates was Dewey Miller.

Goldie Hodge was the Senior Class Princess for the annual Homecoming dance, the theme of which was "Moments to Remember".

The accomplishment in which we took the most pride, however, was our Senior trip to the city of bridges, beatniks, and the bay: San Francisco. It was only through the combined efforts of the entire class and the magnificent help received by our advisors, Mr. Crandall and Mrs. Kolibaba, to whom we are most grateful, that this trip was possible. The Seniors who were unable to go to San Francisco made a trip to Eugene over the same weekend.

The year came to a fitting end when 26 awards were presented to members of the class at commencement.

Valedictorian

JANICE BOICE

Student Body Treas. 4; St. Council 1, 2, 4; G. A. A. 1, 2, 3; Band Treas. 1; Pep Band 2, 3; Office Staff 4; Honor Band 2; Cheerleader 1, 3; Pep Club 1, 2, 3, 4; Pep Club Pres. 4; Annual Staff 2, 4; Homecoming Queen 2; Thespians 2, 4; School Plays 1, 2; Honor Society 2, 3, 4; G. A. A. Girl-of-the-Month 2, 4; Basketball All-Star 1; Volleyball All-Star 1; Typing Award 3; Shorthand Awards 3, 4; Oregon Retailers Distributor's Institute 4; Sweetheart's Ball Princess 1.



Salutatorian

MARY KAY BARKLOW

G. A. A. 1, 2, 3, 4; Band 1, 2, 3, 4; Pep Band 2, 3, 4; Pepster 1; Pep Club 2, 4; Annual Staff 1; Chess Club 2; Youth Group 2, 3; Thespians 2, 4; School Plays 1; Honor Society 2, 3, 4; Jr.-Sr. Banquet & Prom Chairman 3; Glee Club 3, 4; Chorus 1; Young Adults Conference 2; Mascot 4; All-Northwest Chorus 3.



RONALD BABB
 Letterman's Club 3; Basketball 3; Track 2; F. F. A. 2; Hot Rod Club 4



FRED BLAGDEN
 Baseball 2; F. F. A. 2, 3, 4; Hot Rod Club 3, 4; Motor Mechanics 2; Perfect Attendance 1, 2



DAVID BROWN
 Hot Rod Club 4; Outdoor Club 2; Photography Club 1; Chorus 3

GLENN CHURCHILL
 G. A. A. 1, 2, 3, 4; Band 1, 2, 3, 4; Pep Band 1, 2; Office Staff 3; Pepster 3, 4; Pep Club 2, 4; Annual Staff 1, 3, 4; Paper Staff 1; Hot Rod Club 3; Chess Club 2; Homecoming Chairman 4; Youth Group 2; Thespians 2, 4; School Plays 1; G. A. A. Girl-of-the-Month 3, 4; Typing Award 2; Chorus 1; Volleyball All-Star 1; Basketball All-Star 1



DANIEL COLSON
 Baseball 2, 3; F. F. A. 3, Hot Rod Club 4

JON COX
 Class Vice President 1, 4; Letterman's Club 1, 4; Basketball 1; Baseball 1; Football 4; Pep Band 1; Thespians 4; Junior Fire Warden 4



DOLORES DAHL
 Class Secretary 2; G. A. A. 3; Office Staff 4; Pep Club 1, 4; Annual Staff 2, 3; Youth Group 1, 2, 3; Glee Club 1; G. H. A. 1



FRED DAVIS
 Paper Staff 4; Honor Society 1, 2, 3; Academic Letter 3; Bookkeeping Award 3

BONNIE ANVINSON
Office Staff 4; Pep Club
Secretary 4; Paper Staff 4;
Glee Club 4; Sweetheart's
Ball Princess.



EDWARD DWIRE
Basketball 1; Baseball 1;
Track 2; Band 1, 2, 3, 4;
Pep Band 1, 2, 3, 4; F. F. A.
2, 3, 4; F. F. A. Reporter 3,
Vice-President 4; Hot Rod
Club 3, 4; Perfect Attendance
1, 2, 3



GEORGE DWIRE
Basketball 2, 3; Football 3;
Band 1, 2, 3, 4; Pep Band 1,
2, 3; Honor Band 2, 3, 4; F.
F. A. 2, 3, 4; Hot Rod Club
4; Youth Group 3; School
Plays 4; All-State Band 4;
F. F. A. President 2, Sen-
tinel 4



MARJORIE FARRIER
Sergeant-at-Arms 1; G. A.
A. 1, 2, 3, 4; Band 1; Pep
Band 1; Pepster 2; Pep Club
1; Annual Staff 2, 3; Paper
Staff 4; Librarian 3, 4; G.
A. A. Girl-of-the-Month
3; Outdoor Club 4; Chorus
1; All-Star Volleyball 1



JOYCE FLOWERS
Office Staff 4; School Plays
2; Chorus 1, 2; Shorthand
Award 3



JIM GUSTAFSON
Class Vice President 3;
Letterman's Club 1, 2, 3, 4;
Basketball 2, 3; Football 3,
4; Track 2, 3, 4; Hot Rod
Club 4; Honor Society 1,
2, 3, 4

LEONARD HAIGHT
Letterman's Club 4; Track
3, 4; F. F. A. 2, 3, 4



JUDY HANSEN WINCHESTER
G. A. A. 1, 2, 3, 4; Office
Staff 3, 4; Librarian 3; Annual
Staff 2, 3; Paper Staff 4; Paper
Staff Co-Editor 4; Honor Soc-
iety 2, 3; Outdoor Club 4;
Shorthand Award 3





DELLA HARDIN
 Class Secretary 3; G. A. A. 1, 2, 3; G. A. A. Secretary 3; Band 1; Pepster 2, 3; Pep Club 1; Annual Staff 2, 3; Paper Staff 4; School Plays 3; Shorthand Awards 3; Bookkeeping Award 3; G. A. A. Girl-of-the-Year 3; Basketball All-Star 1



ROSALIE HATMAKER
 G. A. A. 2, 3, 4; Band 3, 4; Pep Band 4; Youth Group 2, 3; Thespians 2, 3, 4; School Plays 3; Glee Club 3, 4; Chorus 1

MIKE HELMKEN
 Class President 1, 2, 3; Studentbody President 4; Letterman's Club 2; Basketball 1, 2, 3, 4; Football 2, 3; Track 2; Annual Staff 2, 3; F. F. A. 2; Thespians 3; School Plays 3; Letterman Pirate-of-the-Month 2; Member of Fire Squad 4; Roseburg St. Council Workshop; Eugene St. Council Workshop; Boys State; Range Management Workshop



LEE HENDRICKSON
 Band 1, 2, 3; Pep Band 2; Office Staff 4



GOLDIE HODGE
 G. A. A. 3, 4; Office Staff 4; Pep Club 2, 3, 4; Pep Club Vice President 4; Homecoming Princess 4; G. A. A. Girl-of-the-Month 4; Glee Club 4; Chorus 3; F. H. A. 2, 3; Princess of the Jr.-Sr. Prom 3; Girls Glee 2; Girls League 1, 2, 3; Triple Trio 3



DARREL HOUGLUM
 Hot Rod Club 4



JOHN ISENHART
 Letterman's Club 3, 4; Basketball 3; Baseball 1, 2, 3, 4; Football 4; Wrestling 4; Paper Staff 4; Co-Editor of Paper Staff 4; F. F. A. 2, 3, 4; F. F. A. Vice President 3, President 4; Youth Group 2, 3; School Plays 1; Honor Society 3, 4; Academic Letter 3; Convention at Corvallis, F. F. A. 4



ARNOLD JACKSON
 Class President 4; St. Council Representative 4; Letterman's Club 2, 3, 4; President 4, Secretary-Treasurer 3; Baseball 1, 2, 3, 4; Football 2, 3, 4; Wrestling 4; Band 1; F. F. A. 2; Youth Group 2; Honor Society 1, 2, 3, 4; Wrestling, 2nd Team Dist. All-Stars 4

PRISCILLA JOHNSON
 G. A. A. 1, 2, 3, 4; Office Staff 3, 4; Pep Club 2, 4; Annual Staff 2, 4; School Plays 3; Honor Society 1, 2, 4; G. A. A. Girl-of-the-Month 2; Shorthand Award 3; Glee Club 3, 4; Chorus 1



JUDY KALINA
 Class Secretary 1; G. A. A. 1, 2, 3, 4; Office Staff 4; Pepster 1, 3, 4; Pep Club President 2; Annual Staff 2, 3, 4; Annual Staff Assistant Editor 3, Editor 4; Paper Staff 4; Thespians 2, 4; School Plays 2; Honor Society 2; Jr.-Sr. Prom Chairman 3; G. A. A. Girl-of-the-Month 2, 3, 4; Chorus 1; Volleyball All-Star 1; Basketball All-Star 1; Statistician 2; Shorthand Award 3



JERRY KIGHT
 Letterman's Club 2, 3, 4; Baseball 3, 4; Football 2, 3, 4; Paper Staff 4; Paper Staff Editor 4; F. F. A. 3; School Plays 3; Honor Society 2, 4



DALE LANG
 Basketball 2; Baseball 3; Band 1, 2; F. F. A. 2, 3; School Plays 3; Outdoor Club 4



ROY LIBBY
 F. F. A. 2, 3, 4; F. F. A. Reporter 4; Thespians 3; F. F. A. State Farmer 4; Football and Basketball Announcer 3, 4

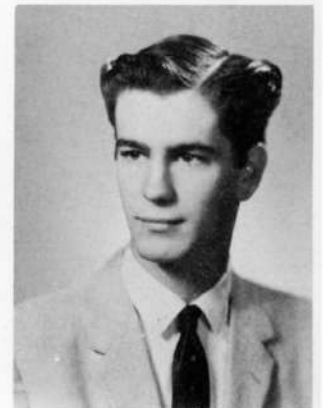


PAULA LUETHE
 Band 1; Youth Group 1, 2; Thespians 4; School Plays 3; F. B. L. A. 3; Glee Club 4; Chorus 2, 3; F. T. A. 2; Lead in Junior Class Play 3; Girls League 3

RICHARD MANICKE
 Letterman's Club 1; Basketball 1, 2, 3, 4; Baseball 1; F. F. A. 1; Outdoor Club 1; Chorus 1; F. F. A. Delegate to Bend



CHARLES MILLER
 F. F. A. 2, 3; Hot Rod Club 3, 4; Motor Mechanics 2





DEWEY MILLER
 Letterman's Club 2, 3, 4;
 Baseball 3, 4; Basketball
 1; Wrestling 4; Pep Band
 1, 2; Office 1, 2; Pep Club
 2; Youth Group 2, 3; Honor
 Society 2, 3, 4



ELLEN MITCHELL
 G. A. A. 1, 2, 3, 4; Office 4;
 Annual Staff 3, 4; Pep Club
 2, 4; Paper Staff 4; Paper
 Staff Editor 4; Librarian 3;
 Youth Group 1, 2, 4; Thes-
 pians 2, 3, 4; School plays
 3, 4; Jr.-Sr. Banquet Chair-
 man 3; Annual Staff Award 3;
 Annual Staff Business Man-
 ager 4; School Historian 3;
 School News Reporter 4;
 Journalism Conference 4

ROY MOLLIER

Class Officer - Vice-Presi-
 dent 1, Secretary 4, Treas-
 urer 2; Letterman's Club 2,
 3, 4; Basketball 1, 2, 3, 4;
 Baseball 1; Football 2, 3, 4;
 Annual Staff 4; Paper Staff
 Editor 4; Youth Group 3, 4;
 School Plays 3; Jr.-Sr. Dec-
 orating Chairman 3; Letter-
 man Pirate-of-the-Month 3;
 Thespians 3, 4; Most Inspir-
 ational Basketball Player 3



OSCAR McALLISTER
 Baseball 2; Track 3; Pep
 Club 4; F. F. A. 2, 3, 4;
 Hot Rod Club 3; Projec-
 tionist 3, 4



JON McWILLIAMS

Letterman's Club 1, 2, 3, 4;
 Vice-President 4; Basket-
 ball 1, 2, 3, 4; Football 1,
 2, 3, 4; Band 1, 2, 3; Honor
 Band 3; Annual Staff 4;
 Honorable Mention Foot-
 ball Player 4; Letterman
 Pirate-of-the-Month 3



BEN NEFF

Class President 1; Sergeant
 -at-Arms 2; Student Coun-
 cil 1, 4; Letterman's Club
 2, 3, 4; Letterman's Vice-
 President 3; Basketball 1,
 2, 3, 4; Baseball 1, 2; Foot-
 ball 1, 2, 3; Paper Staff Co-
 Editor 4; F. F. A. 2, 3; Thes-
 pians 2, 3, 4; School Plays 1,
 2, 3; Leading Actor Medal 3



RICHARD PENBERTHY
 F. F. A. 2, 3, 4; Hot Rod
 Club 3; Motor Mechanics
 2



GARY PLATT
 Class Treasurer 4; Sergeant
 -at-Arms 1, 2; Letterman's
 Club 1, 2; Baseball 1, 2, 3;
 Football 1, 2; F. F. A. 4;
 Outdoor Club 1, 2, 3

DON PRICE

Basketball 3; Annual Staff 3; Paper Staff 4; Hot Rod Club 4; Thespians 2; School Plays 1, 2; Chorus 1



RAE ANN REINKE

St. Council Representative 3; G. A. A. 1, 2, 3, 4, President 4; Band 1, 2, 3, 4; Pep Band 2, 3, 4; Annual Staff 3, 4; Paper Staff 4; Thespians 4; School Plays 3; G. A. A. Girl-of-the-Month 2, 3, 4; Girl-of-the-Year 4; Chorus 1; Basketball All-Star 1; Volleyball All-Star 1; Statistician 3, 4; One-Act Play Award 3; G. A. A. Baseball Chairman 2; G. A. A. Playday Chairman 3



KAY ROBISON

G. A. A. 1, 2, 3, 4; Vice-President 3; Band 1, 2; Office Staff 4; Annual Staff 2, 3, 4; Paper Staff 4; Librarian 3, 4; Thespians 2, 3; School Plays 3; Honor Society 4



LINDA STEDDOM

G. A. A. 1, 2, 3, 4, Vice President 4; Band 1, 2, 3, 4; Pep Band 2; Office Staff 4; Honor Band 2, 3; Cheerleader 4; Pepster 1, 3; Pep Club 2; Annual Staff 1; Youth Group 2, 3; Thespians 2, 4; School Plays 1; Honor Society 2, 3, 4; G. A. A. Girl-of-the-Month 3, 4; Outdoor Club 2; Glee Club 2, 3, 4; Chorus 1; Girls' State 3; All-Northwest Band Conference 3; F. F. A. Chapter Sweetheart 4; Basketball All-Star 1; Volleyball All-Star 1



MIKE WATERMAN

Letterman's Club 4; Basketball 1, 2, 3; Annual Staff 2; F. F. A. 2, 3; School Plays 1; Honor Society 2, 3, 4; Academic Letter 3



ELIZABETH WHALEN

Band 1, 2; Outdoor Club 4

EVELYN YOUNG

Class Treasurer 3; G. A. A. 1, 2, 3, 4, President 3; Band 1, 2; Cheerleader 3; Pepster 4; Annual Staff 3, 4; Paper Staff 4; Librarian 3, 4; Homecoming Princess 3; Thespians 4; School Plays 3; G. A. A. Girl-of-the-Month 3; Short-hand Awards 3; Volleyball All-Star 1; Basketball All-Star 1



Senior Hall



CUTEST BOY AND GIRL
Glenna Churchill and Gary Platt



MOST ATHLETIC PAIR
Jon McWilliams and Rae Ann Reinke



MOST LIKELY TO SUCCEED
Judy Kalina and Arnold Jackson



BEST PERSONALITY
Ben Neff and Evelyn Young

of Fame



FRIENDLIEST
Goldie Hodge and Jon Cox



BEST ALL-AROUND
John Isenhart and Janice Boice



BEST LEADERS
Mary Kay Barklow and Mike Helmken



BEST DRESSED
Roy Mollier and Bonnie Devore

Baccalaureate Service

1960



Langlois Community Church, Langlois, Oregon

PreludeMrs. Dick Barklow
ProcessionalMrs. Dick Barklow
"Rock of Ages"Congregation
Prayer..... Rev. Larson
"Fairest Lord Jesus".....Glee Club
Psalm 19.....Congregation
"My Faith Looks Up To Thee".....Congregation
Sermon - "More Desirable Than Gold" Rev. Larson
"What a Friend We Have in Jesus" Congregation
Benediction Rev. Larson
Recessional..... Mrs. Dick Barklow

Commencement

Processional	Mr. Charles Jensen
Invocation	Pastor Jamie France
Master of Ceremonies.....	Ben Neff
Salutatory Address.....	Mary Kay Barklow
Valedictory Address	Janice Boice
Gift Presentation.....	Arnold Jackson
Commencement Speaker	Dr. Francis Nickerson
	Director of High School College Relations University of Oregon
Presentation of Awards	Mr. Joe DeMarsh
Presentation of Class	
Presentation of Diplomas	Mr. John Mayea
	Chairman, Board of Education
Benediction	Pastor Jamie France
Recessional.....	Mr. Charles Jensen





LEFT TO RIGHT: Jerry Cannon, Vice-President; Shasta Pritchard, President; Sharon Wilson, Treasurer; Patsy Goergen, Secretary; and Glenn Hensley, Student Council Representative.

Junior Class

The 1960 officers elected by the Junior Class were Shasta Pritchard for President, Jerry Cannon for Vice-President, Patsy Goergen for Secretary, and Sharon Wilson for Treasurer.

The class earned money by means of concessions, and several dances. This was the first year for the Junior Class to have a Sadie Hawkins Dance, and it was quite a success.

The Juniors were proud to claim Jeanette Meade as their candidate when she was crowned Homecoming Queen of 1960.

Their biggest event of the year was the Junior-Senior Banquet and Prom. Glenn Hensley was General Chairman, with Kathy Bowman as Banquet Chairman, and Patsy Goergen as Prom Chairman. The theme was "Hawaiian Sunset."

We wish to thank Mr. Heriza, Miss Moyle, Mr. Green, and Mr. Kolibaba for acting as our advisors this year. We also wish to give them special mention for being such excellent ones.



Gene Allen



Theda Balzer



Beccy Bauman



Elizabeth Bell



Mary Sue Bennett



Kathy Bowman



Ray Brown



Jerry Cannon



Mary Jo Carpenter



Linda Colson



Dean Couch



Janice Crose



James Ellsworth



Fran Everest



John Fleetwood



Ann Fuller



Donna Geer



Patsy Goergen



Dee Goodhue



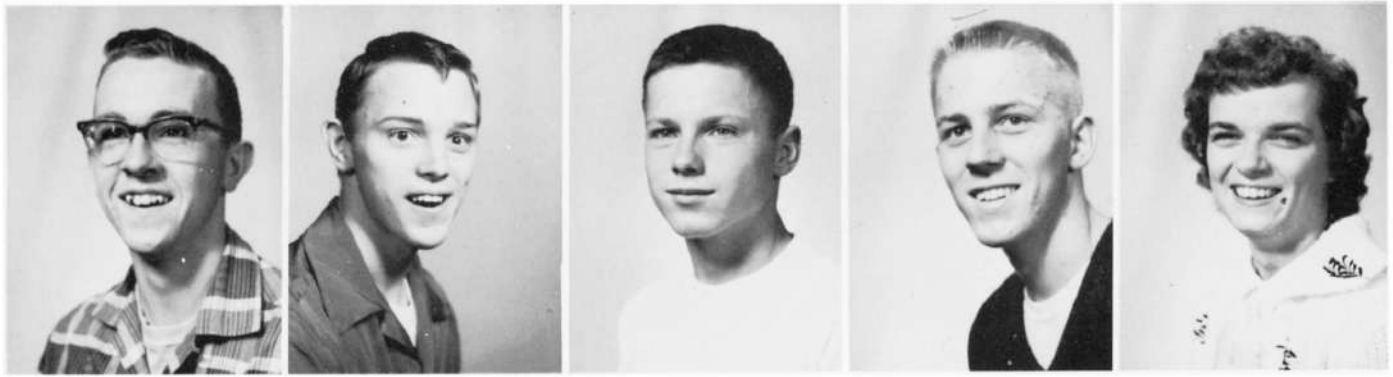
Carolyn Harris



Gene Hayden



Glenn Hensley



Jim Hubbard

Larry Hubble

Henry Isenhart

Eric Johnson

Lila Knutson



Virginia Lang

Margie Littrell

Roy Martin

Jeanette Meade



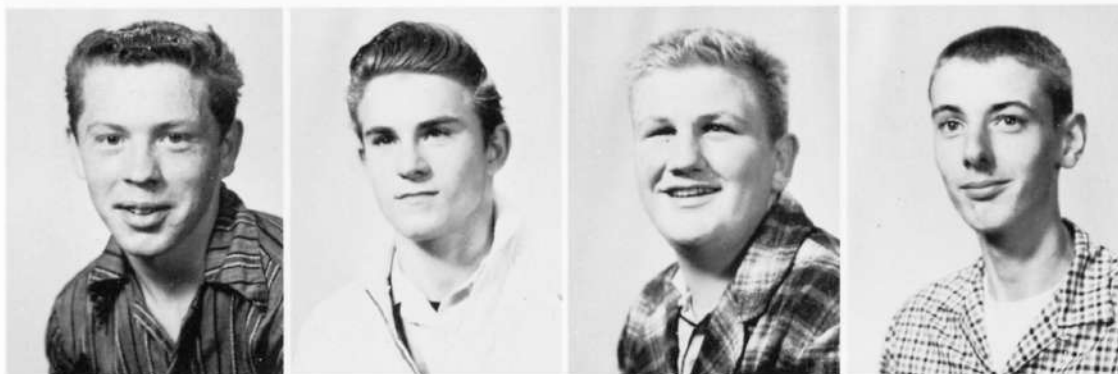
Steve Miller

Tom Molthu

Jackie Myers

Bob Nelson

Royal Ostrander



Phil Paris

Perry Pendergrass

Fred Peterson

Raymond Pratt



Shasta Pritchard

Ron Rose

Glen Smith

K. C. Smith

Larry Smith



Starr Smith

Carolyn Stilts

Mike Storm

Jack Storm



Billy Sweet

Wanda Thomas

Lee Tucker

Dennis Waldie

Anne West



Marsha Wilson

Sharon Wilson

Terry Woodworth

Frank Zabroski



LEFT TO RIGHT: Vicki Buss, Treasurer; Eddie Lester, Ben Lueth, Sergeants-at-Arms; James Hatmaker, Vice President; Charles Hansen, Class Representative; Ronni Carver, President; Merri Jensen, Secretary; Not Pictured.

Sophomore Class

The Class of 1962 began their career at Pacific in the fall of 1959. They bravely weathered the initiation ceremonies administered by the Seniors.

They were the sponsors of a successful New Year's Eve Party held at Pacific High School and served breakfast to the weary guests. They also had two after-game dances and a Leap Year Dance.

It was their candidates, Lenore Lindsay and Ken Humphrey, who ruled over the Freshmen Sweetheart's Ball.

During the basketball season, the Sophomores encouraged the school spirit by selling purple and white pom-poms. They also took over the candy sales the latter part of the year.

Merri Jo Jensen and Charles Hansen were their representatives in the Homecoming Court.

The Sophomores are anticipating an ever more successful year of school life as they enter the Junior class.



Keith Allen



Paul Back



Gerald Boggie



Mike Burt



Vicki Buss



Ronnie Carver



Jim Christensen



Judy Church



Merle Churchill



Dan Cook



Sharon Cromwell



Virginia Cuatt



Sherry Dahrens



Dale Denn



Kitty Dougherty



Marilyn Dykes



Judy Ellis



Lorraine Fales



Gayle Frost



Mary Fuller



Carol Gustafson



Lester Haight



Charles Hansen



James Hatmaker



Ruby Hatmaker



Leah Hendrickson



Don Hill



Mike Hintharne



Linda Hougum



Kenny Humphrey



Merrie Jo Jensen



Sandi Jerde



Douglas Johnson



Loney Kennedy



Dale Klinner



Gary Klinner



Gordon Knutson



Jim Kosta



Elaine Lang



Eddie Lester



Lenore Lindsay



Ray Lowe



Ben Luethe



Jim Mahaffy



Thalia Mathieson



Don May



Shirley McAllister



Johnny Miller



Rosa Lee Mitchell



Donna Nickerson



June Noah



Terry Robbins



Daryl Robison



Delmer Robison



Ruth Rogers



Kenny Rundberg



Jim Severns



Connie Shaw



Marcella Smith



Kay Steddom



Marvin Storm



Starlene Striebel



Louise Sullivan



Brice Wagner



Jim Wahl



Bob Wardrip



Yvonne Wells



Adella Weichmann



Caroll White



Bill Wilson



Ron Woodworth



Helene Zabroski



LEFT TO RIGHT: Russ Wright, Class Representative; Bob Bartlett, President; Penny Cope, Treasurer; Frank Smith, Sergeant-at-Arms; Pat Carver, Secretary; Rod Dunn, Vice President.

Freshman Class

This year the freshmen worked at making money for their dance, the Sweetheart's Ball. To accomplish this they had a car wash, made french-fried potatoes and candied apples to sell at football games, and sponsored an after-game dance. Voting for the queen of the Sweetheart's Ball the students also increased their budget money. Bonnie Hodge and Frank Smith were their representatives for the Sweetheart court.

They survived the initiation put to them by the upperclassmen and proudly took their place among the student body at Pacific High School.



Don Allen



Karman Babb



Pat Barr



Bob Bartlett



Bill Bates



Larry Bowman



Candice Burt



Dana Buss



Clarence Byers



John Carpenter



Pat Carver



Ira Chase



Mary Church



Ginger Colson



Penny Cope



Frankie David



Craig Deming



Rod Dunn



Judy Guzman



Chuck Hansohn



Bonnie Hodge



Richard Huret



Klaus Jensen



Dennis Johnson



Verlin Jones



Marvin Jones



Susan Kight



Delores Krick



Rodney Lester



Nanine Libby



Judy Lindsay



Razetta Lower



Raymond Manicke



Cheryl Marlow



Karole Miller



Marilyn Miller



Julie McWilliams



Richard McGowan



Corky Olson



Susan Preston



Barbara Read



Robert Reinke



Bruce Robbins



Ron Roberts



Rod Sabin



Larry Sequine



Jerry Smith



Marilyn Smith



Willis Smith



Laurel Steddom



Jerry Strauser



Wayne Streets



Elaine Taylor



Richard Thronburg



Chris Tope



Linda Turner



Randy Waldie



Shirley Wallace



Comie Wells



Gale West



Jo White



Jerry Wilson



Diane Woltring



Russ Wright

Students

not

Pictured

SENIOR
Don Kutch

JUNIOR
David Isham

FRESHMEN
Carol Colman
Mike McCarthy
Diane Prince
Darleen White



Organizations

Studentbody Officers



Phil Paris, Vice President; Janice Boice, Treasurer, Fran Everest, Secretary; Mike Helmken, President.

Mike Helmken presided over the Student Council this year. Some of their activities were arranging for an Exchange Assembly with Gold Beach, working out rules for various clubs, and revising the Constitution. Mike and Janice went to Eugene for a workshop. Later all of the council went to Roseburg and met with other councils to learn how to run a student government more effectively.

LEFT TO RIGHT: Fran Everest, Janice Boice, Bob Bartlett, Phil Paris, Charles Hanson, Mike Helmken, Ben Neff, Arnold Jackson, Glenn Hensley, Russ Wright, Ronni Carver, Shasta Pritchard.

Student Council



Annual Staff



Kathy Bowman, Assistant Editor; Miss Anderson, Advisor; Judy Kalina, Editor.



SECTION EDITORS - FIRST ROW: Evelyn Young, Jon McWilliams, Shasta Pritchard, Ellen Mitchell. SECOND ROW: Sharon Wilson, Mary Sue Bennett, Kay Robison, Arnold Jackson.

By working during noon hour and after school, the Annual Staff was able to put out the 1960 Pirates Scope. The members spent many hours selling ads, designing pages, and writing copy. We hope when looking through your annual you will recall your Pacific High School days.

FIRST ROW: Shasta Pritchard, Jeanette Meade, Kitty Dougherty, Pat Carver, Carol Ann Gustafson, Kay Steddum, Helene Zabroski, Susan Preston, Jo White, Ellen Mitchell. SECOND ROW: Priscilla Johnson, Rae Ann Reinke, Rosa Mitchell, Marilyn Dykes, Sharon Wilson, Mary Sue Bennett, Linda Houghlum, Carroll White, Judy Kalina, Miss Anderson, Advisor. THIRD ROW: Evelyn Young, Glenna Churchill, Kay Robison, Glenn Hensley, Judy Hansen, Jon McWilliams, Penny Cope, Arnold Jackson, Kathy Bowman.



Order of the Pirates



Arnold Jackson, President; Eric Johnson, Secretary-Treasurer; Jon McWilliams, Vice President.

Our lettermen were busy this year sponsoring many activities. Two that all enjoyed were the Donkey Basketball game and the Harlem Clowns. The boys also sold concessions at turkey shoots. This year they purchased a Vibra-Whirl bath and a pitching machine.

FIRST ROW: Ray Pratt, Robert Reinkie, Jim Wahl, Dale Denn, Tom Moltu, Lee Tucker, Larry Smith, Eric Johnson, Arnold Jackson, Ben Leuthe. SECOND ROW: Butch Allen, Larry Bowman, Rodney Dunn, Richard Manicke, Ben Neff, Jon McWilliams, Russ Wright, John Isenhardt, Jerry Kight, Dewey Miller. THIRD ROW: Roy Mollier, Jon Cox, Leonard Haight, Ron Rose, Phil Paris, Fred Peterson, Don Hill, Jim Gustafson, Mike Waterman, Ira Chase.



G.
A.
A.

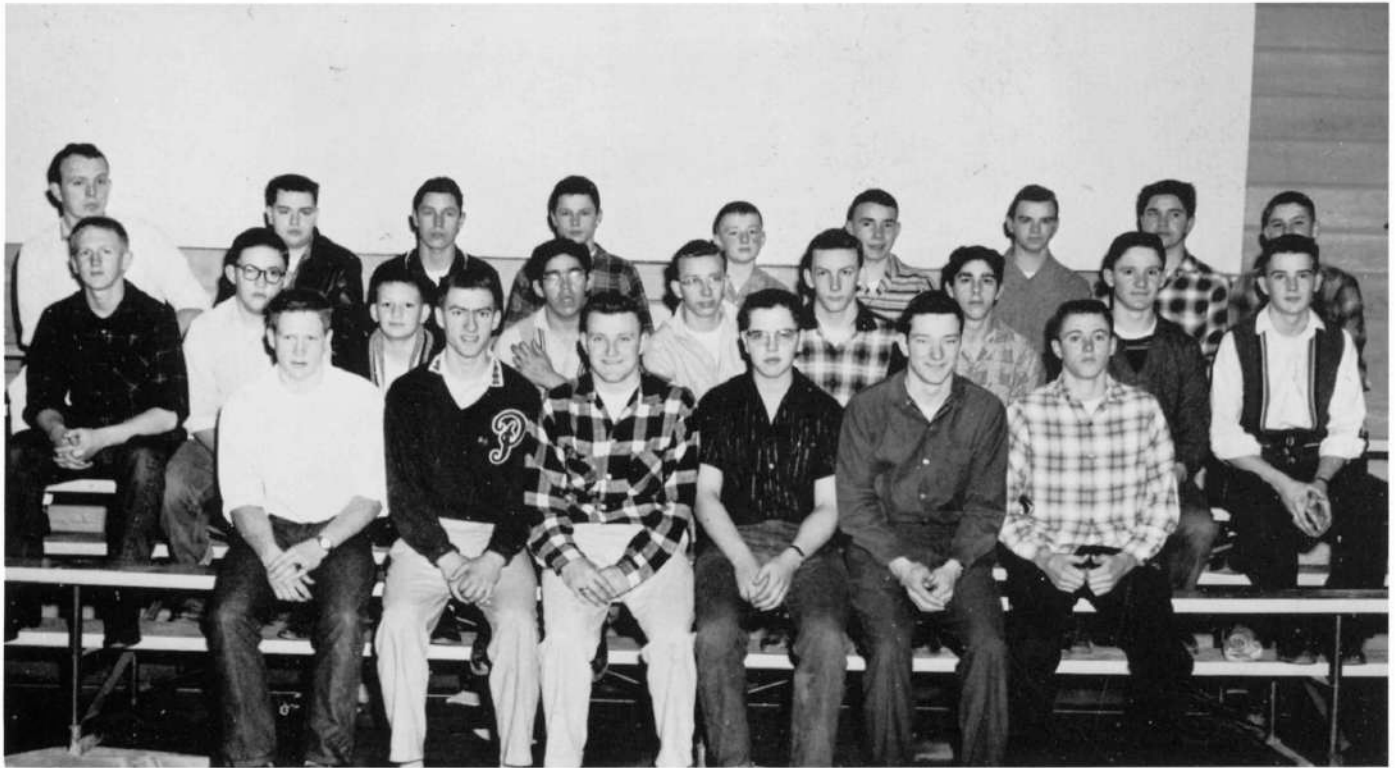


G. A. A. OFFICERS - LEFT TO RIGHT: Kathy Bowman, Della Hardin, Linda Steddum and Rae Ann Reinke.

G. A. A. was active with its numerous play-days and a slumber party. The girls were honored with a banquet which was held at the close of the year. Rae Ann Reinke was chosen as the traditional girl of the year.

FIRST ROW: Miss Moyle, Advisor; Kathy Bowman, Della Hardin, Rae Ann Reinke, Linda Steddum, Marji Farrier, Penny Cope. SECOND ROW: Laurel Steddum, June Noah, Terry Woodworth, Rosalie Hatmaker, Mary K. Barkdow, Kay Steddum, Ellen Mitchell, Judy Hansen. THIRD ROW: Kay Robinson, Goldie Hodge, Evelyn Young, Judy Kalina, Sherry Dahrens, Julie McWilliams, Glenna Churchill. FOURTH ROW: Marilyn Miller, Dana Buss, Cheryl Marlow, Frankie David, Connie Wells, Rosa Mitchell, Carroll White and Priscilla Johnson.





FIRST ROW: Lee Tucker, Secretary; Roy Libby, Reporter; George Dwire, Sentinel; Roy Martin, Treasurer; Ed Dwire, Vice President; John Isenhart, President. SECOND ROW: Brice Wagner, Jerry Smith, Chuck Hansohn, Leonard Haight, Ray Brown, Jerry Cannon, Lester Haight, Ron Roberts, Richard Thronburg. THIRD ROW: Butch Allen, Dan Cook, Henry Isenhart, Rodney Lester, Rod Sabin, Richard Penberthy, James Hatmaker, Ron Woodworth.

F. F. A.

The F. F. A. had a busy year with their many activities which included: selling hot dogs, milk and orange juice; grading the track and parking area and resurfacing the football and baseball fields. Two highlights of the year were the State Convention and the Parent-Son Banquet. At the Banquet Miss Linda Steddom was chosen for Chapter Sweetheart. Roy Libby, a senior, was awarded with the degree of State Farmer.

John fastens F. F. A. gift bracelet for Linda.



AWARDS AT BANQUET: Jerry Cannon, Jerry Smith, John Isenhart, Roy Libby, Ed Dwire.

Banquet Members join together in music making.





FIRST ROW: Bonnie DeVore, Secretary; Miss Moyle, Advisor; Janice Boice, President. SECOND ROW: Ruth Rogers, Susan Kight, Connie Wells, Cheryl Marlow, Linda Turner. THIRD ROW: Gayle Frost, Linda Colson, Ginger Colson, Adella Weichmann, Diane Forty, Judy Guzman, Barbara Reed, Karole Miller, Candice Burt. FOURTH ROW: Sandi Jerde, Lenore Lindsay, Dana Buss, Marilyn Miller, Bonnie Hodge, Dona Geer, Yvonne Wells, Marilyn Smith, Wanda Thomas. FIFTH ROW: Goldie Hodge, Rosa Mitchell, Priscilla Johnson, Judy Ellis, Terry Woodworth, Ellen Mitchell.

Pep Club

The Pep Club, a newly organized club this year, added much to the games with their organized cheering and routines with pom-poms, along with the Rally. Their outfits were purple and white checked blouses and white corduroy skirts.

Glee Club

Under the leadership of Mrs. Kolobaba, the Glee Club sang at Baccalaureate.

FIRST ROW: Fran Everest, Mrs. Kolobaba, Advisor; Nanine Libby, Karmen Babb, Barbara Enyeart, Theda Balzer, Priscilla Johnson. SECOND ROW: Laurel Steddum, Ellen Mitchell, Goldie Hodge, Virginia Snyder, Ruby Hatmaker, Starlene Striebel. THIRD ROW: Louise Sullivan, Carroll White, Rosa Mitchell, Mary K. Barklow, Rosalie Hatmaker, Anne West. FOURTH ROW: Virginia Cuatt, Paula Leuthe, Linda Steddum.





FIRST ROW: Joyce Flowers, Starr Smith, Margi Littrell, Ellen Mitchell, Pam Rappe, Bonnie DeVore, Priscilla Johnson, Judy Hansen, Della Hardin, Babe Snider. SECOND ROW: Linda Steddom, Janice Boice, Fran Everest, Goldie Hodge, Kay Robinson, Judy Kalina, Kathy Bowman.

Office and Library

LEFT TO RIGHT: Elizabeth Bell, Carolyn Stilts, Margi Lettrell, Anne West, Terry Woodworth, Janice Crose, Virginia Lang, Kay Robinson, Evelyn Young, Barbara Enyeart, Theda Balzer. Margi Farrier is at the desk.





Sports

Football



STANDING - Left to Right: E. Johnson, B. Luethe, D. Miller, J. Gustafson, R. Thronburg, L. Smith, L. Kennedy, F. Peterson, D. Hill, J. Wahl, J. McWilliams, L. Tucker. KNEELING: J. Kight, D. Denn, I. Chase, R. Dunn, R. Wright, L. Bowman, J. Isenhardt, R. Mollier, T. Molthu, Manager R. Reinke, A. Jackson.



Above is a picture of our small, but willing and fighting football team, which battled with some of the best A-2 teams in the state. Because of the small J. V. and Varsity teams, the two were combined into one, which brought many of the younger players up into Varsity action. With these young players getting the necessary experience, they hold a good football future for Pacific High School. Even though Pacific came out on the short end of the column, there was much gained through the season because of the hard-working determined ball players who fought hard and never quit, and because you, the student body of Pacific High, stood behind the team and supported them all the way. This, our third year with football at Pacific, proved to be a gaining year in another way. Our first freshmen football team was formed, and after looking at their scores and at the oncoming players, all we can say is, "Look out for Pacific in the future."

Fighting Freshmen



STANDING - Left to Right: Coach John Heriza, B. Bartlett, I. Chase, R. McGowan, R. Sabin, C. Byers, L. Bowman, R. Waldie, C. Tope, J. Smith. KNEELING: R. Roberts, K. Jenson, C. Deming, R. Wright.



HEAD COACH
Ray Comstock



FRESHMAN AND DEFENSE
John Heriza



LINE COACH
Arvin Crawford





LARRY BOWMAN



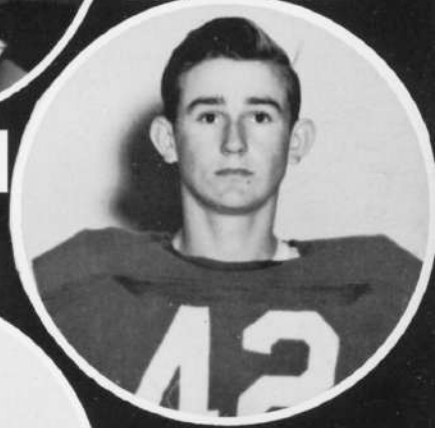
LARRY SMITH

BEN LUETHE



FRED PETERSON

ROY MOLLIER



JERRY KIGHT



DON HILL

IRA CHASE



LEE TUCKER



ROD DUNN



ARNOLD JACKSON

JIM GUSTAFSON





JON McWILLIAMS

RUSS WRIGHT



TOM MOLTHU



JOHN ISENHART



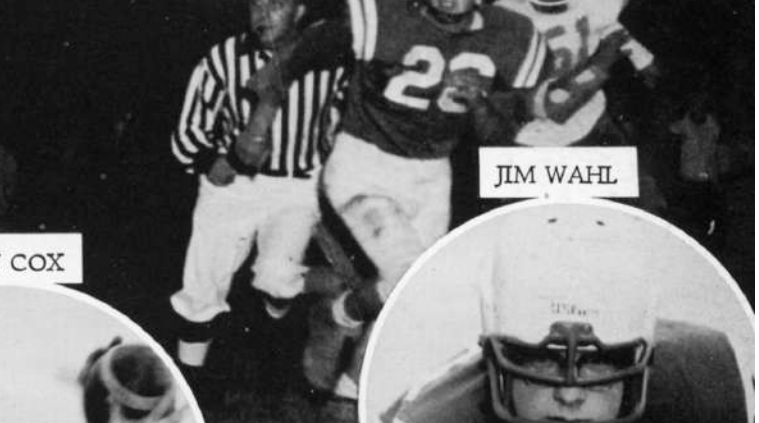
RON ROSE



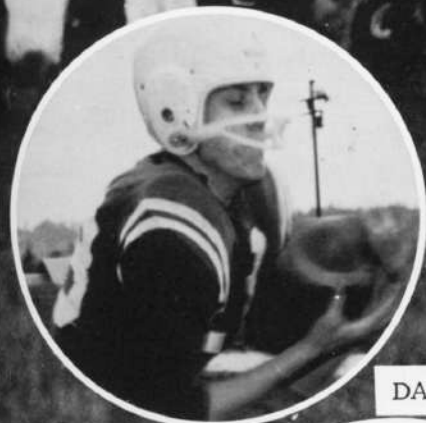
JIM WAHL



JON COX



DALE DENN



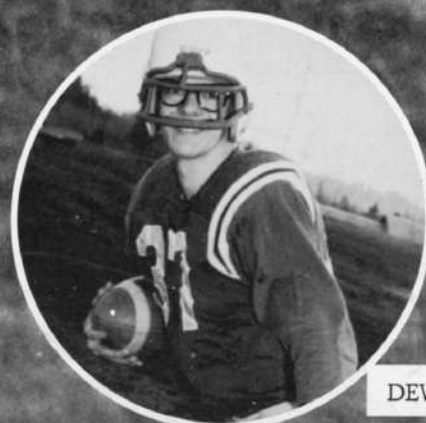
ERIC JOHNSON



DEWEY MILLER



RICH THRONBURG



Varsity Basketball



STANDING - Left to Right: D. Couch, J. McWilliams, P. Paris, J. Gustafson, R. Manicke, M. Waterman, B. Luethe, E. Johnson, R. Rose, B. Neff, M. Helmken, R. Mollier. KNEELING: Manager R. Pratt, Coach Bob Stoltz, Manager J. Ellsworth.

Even though all the scores didn't favor the Pacific squad, it was a very successful season for the Pirates. Coached by Bob Stoltz, they showed fighting determination and, being backed up by a spirited cheering section, fought their opponents until the final buzzer.

Pacific ended the season holding fifth place in the league. But more important, a smooth-working team was formed this year by the hard working group as they battled their way through the season. The returning lettermen, who worked hard during the season, show a promising future in basketball for Pacific.

The team lost four seniors this year who also showed well and helped the team much during their last season.



Tournament

Pacific	60
Brookings	41
Bandon	59
Brookings	54



Scores

Riddle	65
Bandon	57
Pacific	56
Riddle	57





LEFT TO RIGHT: Most Improved Player, Ben Luethe; Most Valuable Player, Phil Paris; Most Inspirational Player, Ben Neff.

Basketball Awards

Game Scores

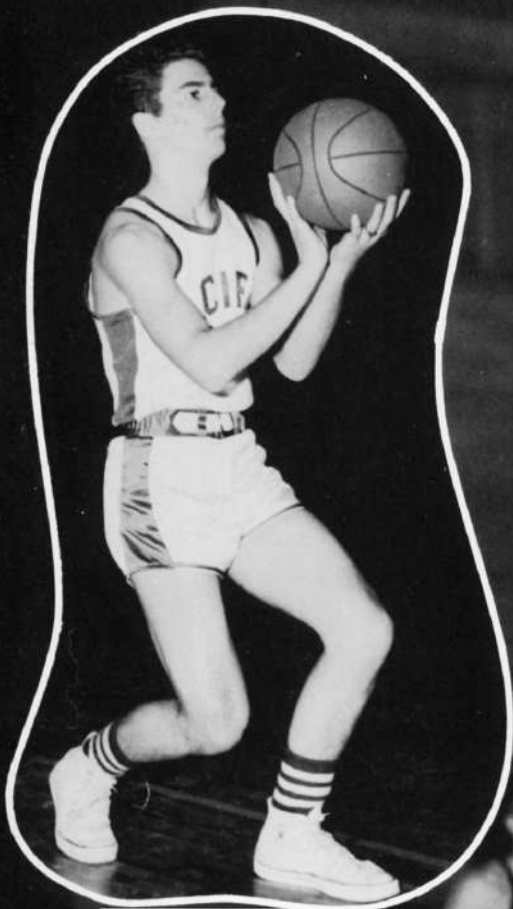
Pacific	40	Elmira	50	Pacific	36	Gold Beach	57
Pacific	39	Mapleton	52	Pacific	50	Bandon	33
Pacific	28	Elmira	54	Pacific	48	Powers	66
Pacific	43	Mapleton	54	Pacific	46	Myrtle Point	51
Pacific	47	N. Bend 'JV'	37	Pacific	60	Brookings	43
Pacific	42	Myrtle Point	59	Pacific	43	Coquille	68
Pacific	33	Brookings	38	Pacific	53	Gold Beach	60
Pacific	56	Coquille	63	Pacific	35	Bandon	55
Pacific	42	Powers	69				

And the game's on!



Don't get grabby!





Senior
RICHARD MANICKE

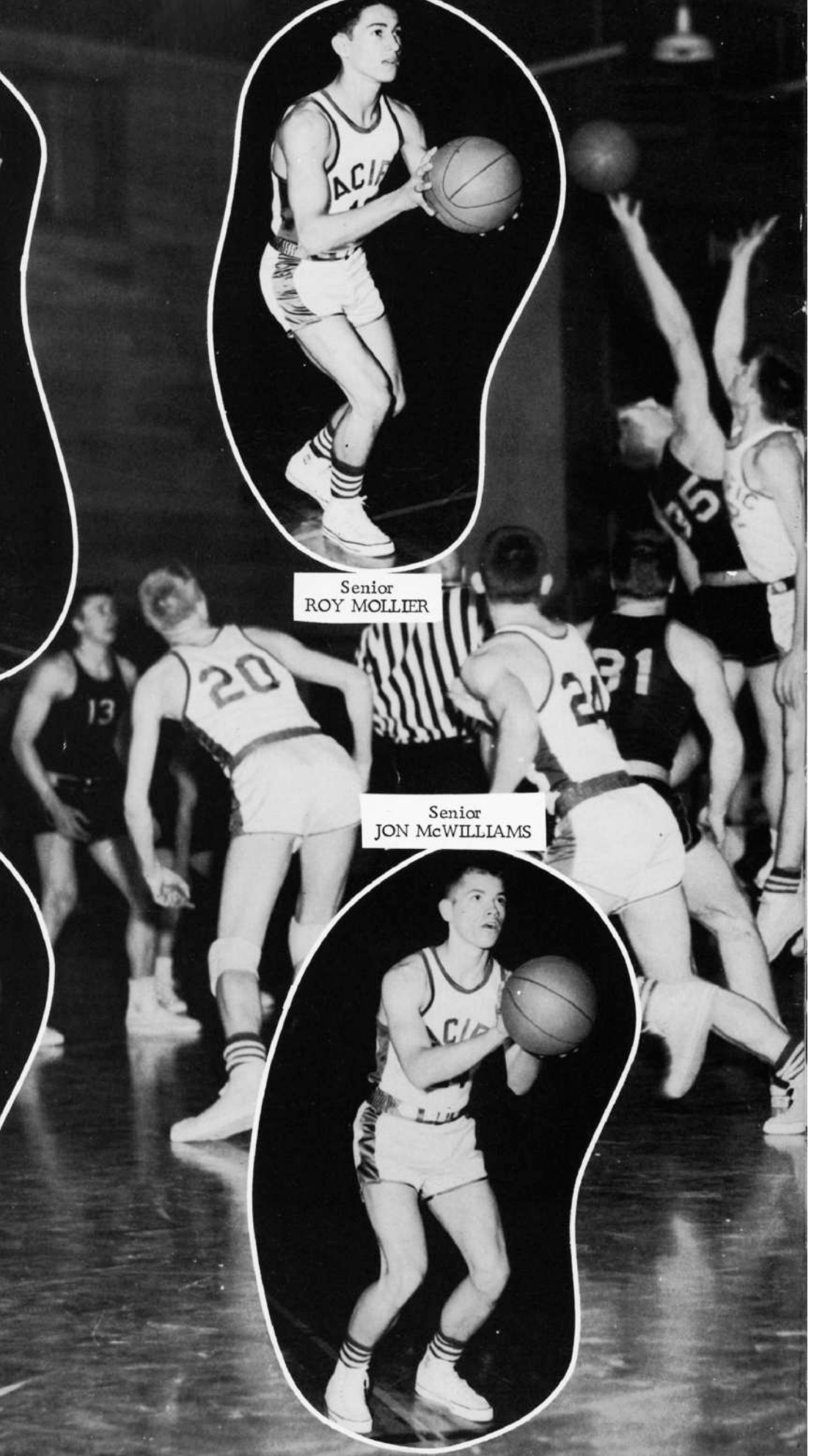


Senior
ROY MOLLIER

Sophomore
BEN LUETHE



Senior
JON McWILLIAMS





Senior
BEN NEFF

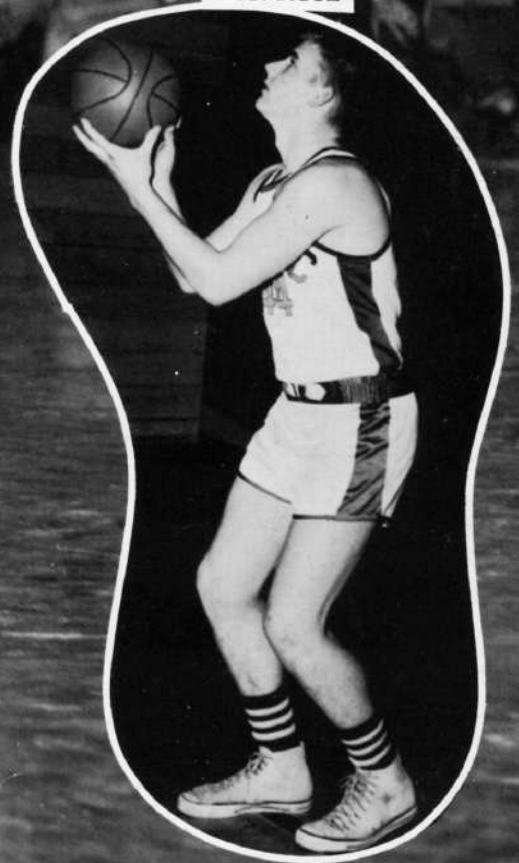


Junior
PHIL PARIS

Junior
ERIC JOHNSON



Junior
RON ROSE





STANDING - Left to Right: C. Hanson, K. Rundburg, J. Mahaffey, D. Hill, B. Wagner, Coach Ray Comstock. KNEELING: J. Severns, L. Kennedy, D. Robison, D. Johnson, F. Zabroski, J. Cannon.

Junior Varsity

Freshman

STANDING - Left to Right: Coach John Heriza, D. Johnson, R. Thronburg, B. Bates, C. Deming, F. Smith, C. Byers, K. Jensen, J. Smith, Student Teacher Odell Flake. KNEELING: R. Reinke, R. Roberts, B. Bartlett, L. Bowman, I. Chase, R. Sabin, C. Tope, D. Allen. SITTING: C. Olsen, J. Wilson, M. Jones, W. Streets, R. Dunn, R. Manicke, R. Wright.





Too many fingers!



Hey! That's my arm!

Got it Luethe?



What?

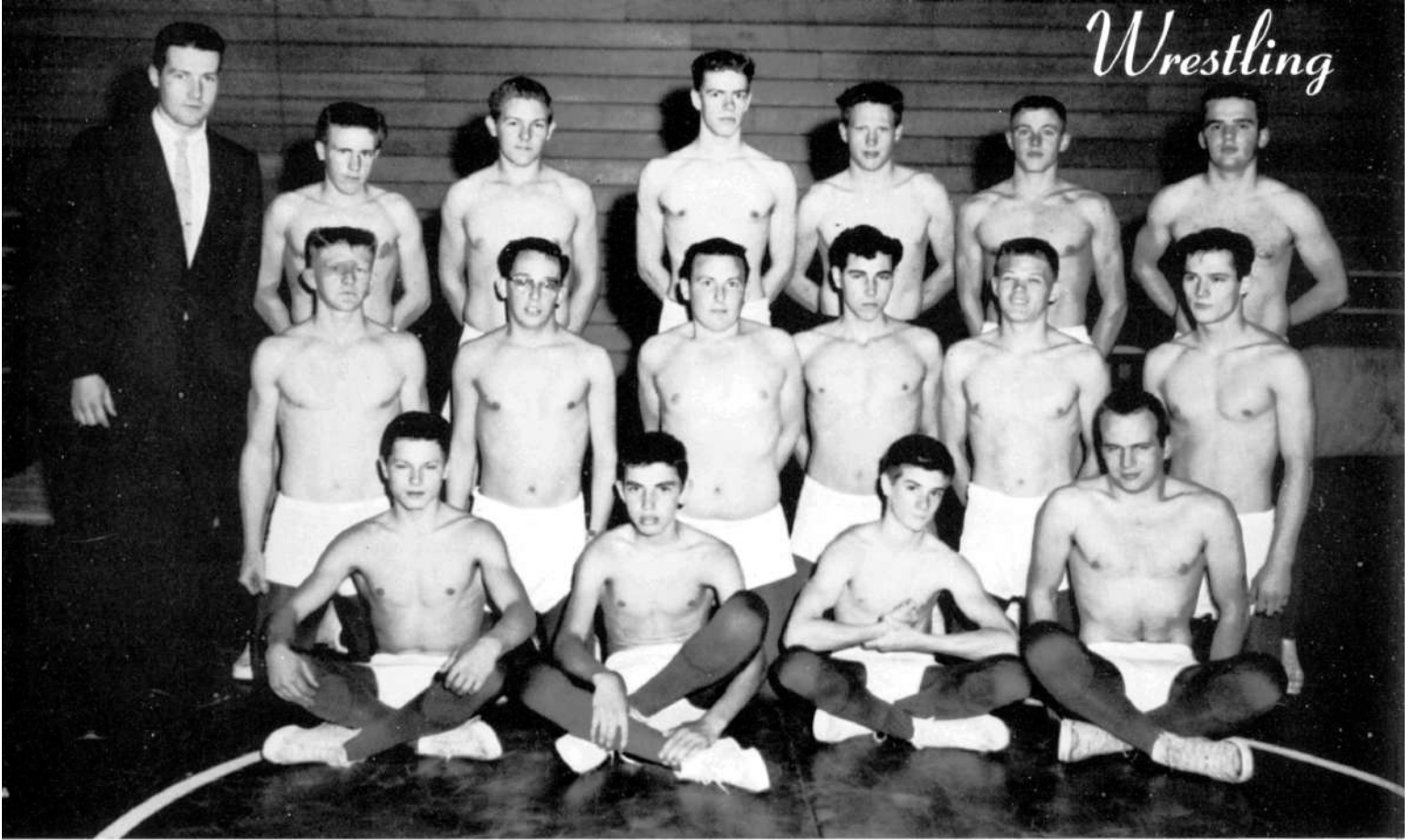


Little higher, Phil!

Surround him boys!



Wrestling



BACK ROW - Left to Right: Coach Arvin Crawford, G. Klimmer, J. Strauser, D. Miller, L. Tucker, J. Isenhart, A. Jackson. CENTER ROW: G. Hensley, D. Brown, D. Houglum, F. Davis, D. Lang, G. Platt. FRONT ROW: H. Isenhart, K. Jensen, J. Wilson, T. Molthu.



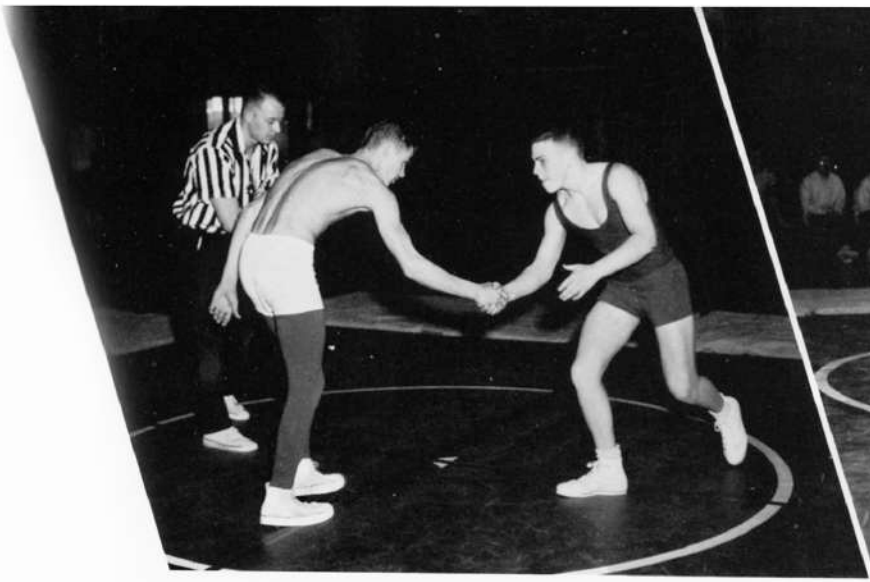
The year of 59-60 proved to be a year of new things at Pacific. This year a new sport was introduced to the school which was accepted with much enthusiasm. At the start of the wrestling season there was a large turn out, even though there was a lack of equipment. Soon new ropes, mats, and suits were obtained, and the boys began a very successful season.

Coached by Arvin Crawford, the matmen of Pacific turned in a very impressive first year record by winning many of their matches and sending three men to the state finals.

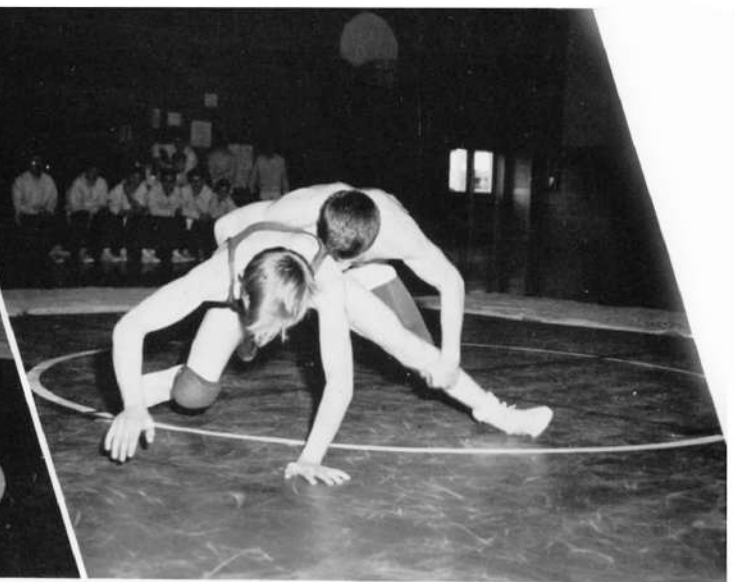
Pacific holds a strong future in wrestling, judging from the number of returning lettermen.

Learning new holds.





John Isenhart... and the match is on!



Henry Isenhart... Aw, quit pulling my leg!

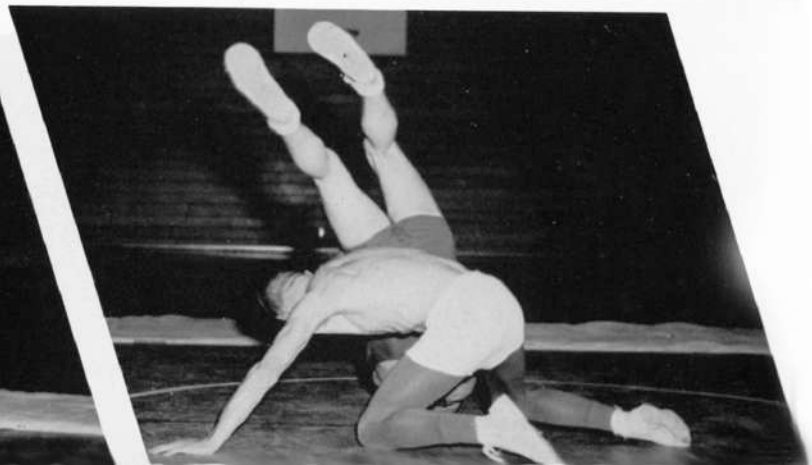
Dewey Miller... On your back please!



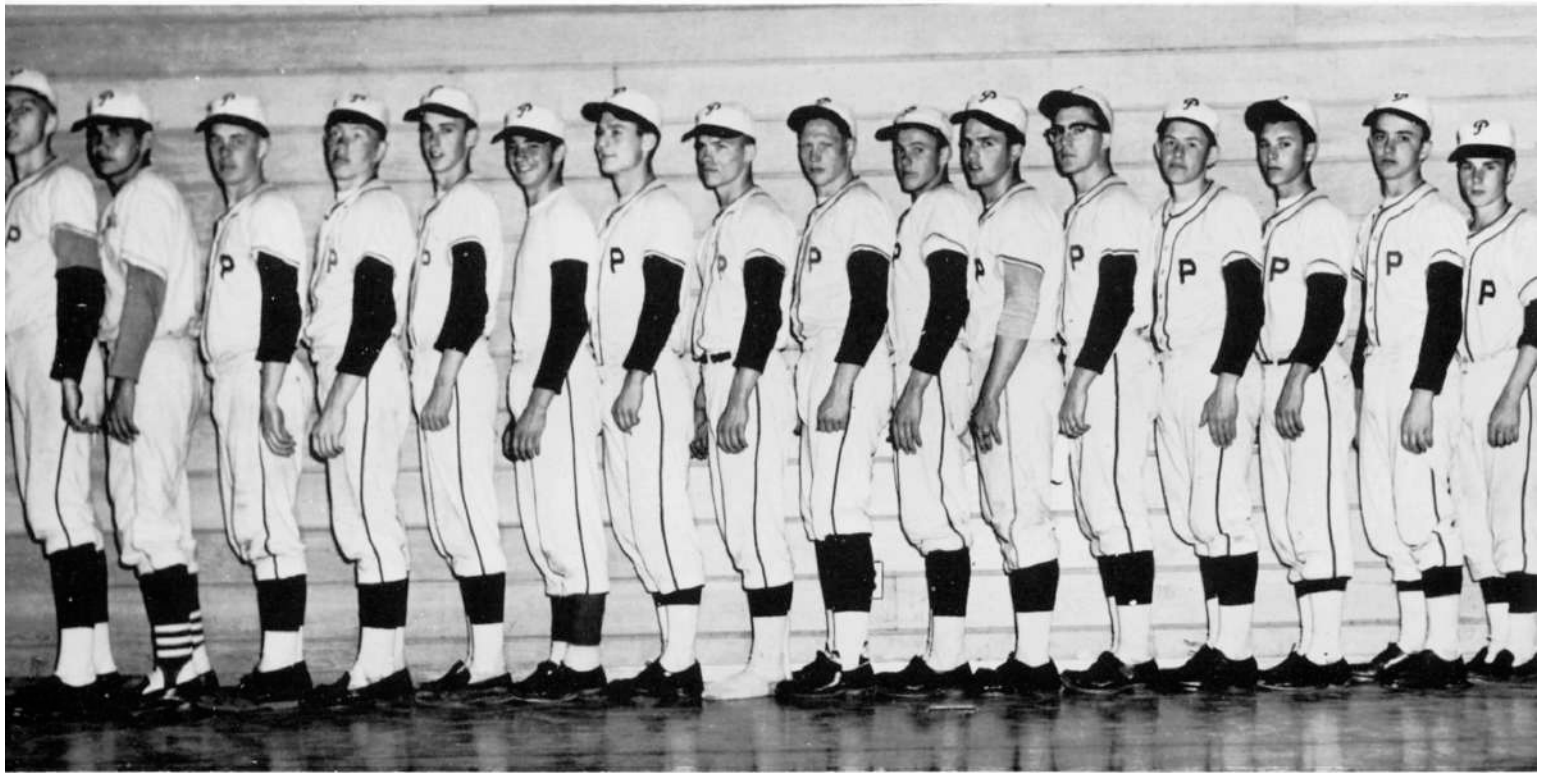
Two heads are better than one



Hey!! Not so rough!!



Baseball



LEFT TO RIGHT: E. Johnson, R. Byers, K. Rundburg, P. Paris, L. Kennedy, D. Robison, G. Platt, J. McWilliams, L. Tucker, J. Isenhart, A. Jackson, J. Kight, B. Bartlett, F. Zabroski, R. Dunn, I. Chase, Coach Bob Stoltz.



This year an important improvement was made in baseball as well as the other sports. Before the season started, the field was improved and a new backstop was made, which gave Pacific a good field.

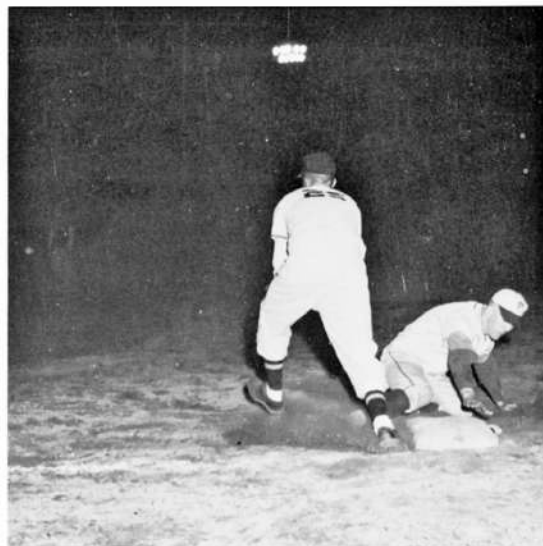
When the season started, bad weather caused the practices to be held in the gym, which made it somewhat difficult for the needed training. But, the season started anyway. The boys got off to a rather slow start, but snapped it by downing the Brookings team in a 6-3 game. From here the team finished the season with some very close scores.

Under the guidance of Coach Bob Stoltz, the team had a very successful year and finished with third place honors in the league.

The team, composed mostly of underclassmen, will have a large number of outstanding lettermen returning next year. Many freshmen, sophomores and juniors gathered varsity experience during the season, which will help Pacific produce a strong ball team in the coming years.

League Scores

PACIFIC	OPPONENT
8.....	Coquille 9
0.....	Myrtle Point 24
2.....	Gold Beach 6
6.....	Brookings 3
1.....	Gold Beach 0
8.....	Bandon 12
7.....	Bandon 10
10.....	Coquille 5
3.....	Myrtle Point 7
6.....	Brookings 1



Safe!



No doubt here. Out!



Mac holds him on.

Ike takes strike one, while Rundberg sends one sailing!



Track



Ben Luethe



John Isenhart and Eric Johnson



Phil Paris and Lee Tucker



Chuck Hansen, Larry Sequine



Leonard Haight



Dean Couch,
Doug Johnson



J. Mahaffe, J. Severns



Jim Wahl



Coach Mr. Cagle, Manager
G. Knutson, D. Couch

Although the Pacific High Track Team did not chalk up any remarkable victories, Coach Harold Cagle's squad did show good in a number of events.

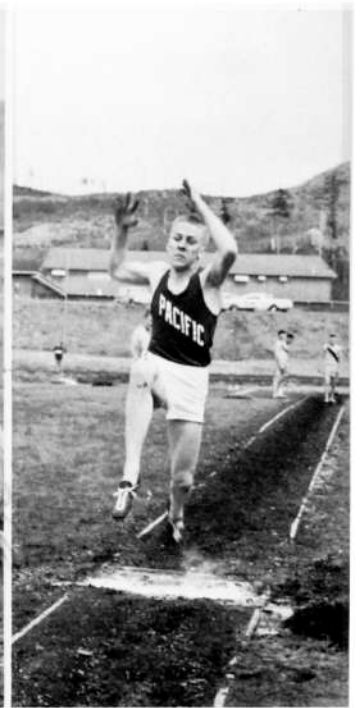
This year a large number of boys tried for the team, but only a few lettermen returned. This did not hinder them any, as they set to work and showed some remarkable results toward the end of the season.

Track also holds a good future as many gained experience this year and will return to support the team next year.





Tucker races home in the 440.



Johnson sets sail!



B. Luethe, up and over; on--?



P. Paris: Launching time!



Couch and Isenhart winning the mile.



CHEERLEADERS: Fran Everest, Linda Steddom, Patsy Goergen.

Rally

MASCOT: Mary Kay Barklow



This is the first year Pacific has had a mascot. Mary Kay has set a standard for succeeding mascots which may be hard to live up to. Mary Kay worked with the Cheerleaders and Pepsters individually and as a group.



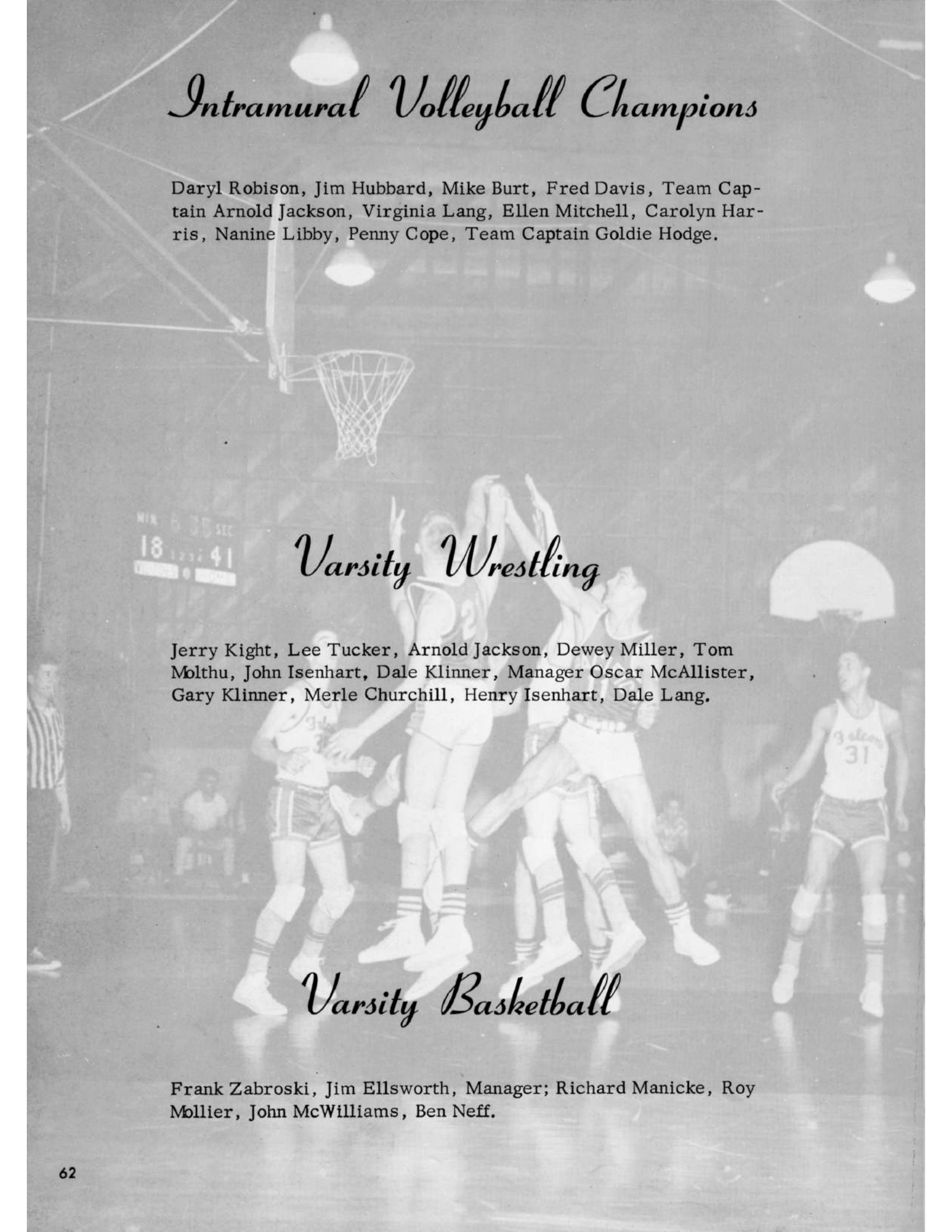
PEPSTERS: Sharon Wilson, Vickie Buss, Kay Steddom, Carol Gustafson, Ronni Carver, Kathy Bowman.



This action shot shows Pat and Penny leading the student body in a yell. Throughout the year they did a fine job and faithfully supported a successful freshman team.

JV'S: Penny Cope, Pat Carver, Julie McWilliams





Intramural Volleyball Champions

Daryl Robison, Jim Hubbard, Mike Burt, Fred Davis, Team Captain Arnold Jackson, Virginia Lang, Ellen Mitchell, Carolyn Harris, Nanine Libby, Penny Cope, Team Captain Goldie Hodge.

Varsity Wrestling

Jerry Kight, Lee Tucker, Arnold Jackson, Dewey Miller, Tom Molthu, John Isenhardt, Dale Klinner, Manager Oscar McAllister, Gary Klinner, Merle Churchill, Henry Isenhardt, Dale Lang.

Varsity Basketball

Frank Zabroski, Jim Ellsworth, Manager; Richard Manicke, Roy Mollier, John McWilliams, Ben Neff.



Activities

Homecoming Queen

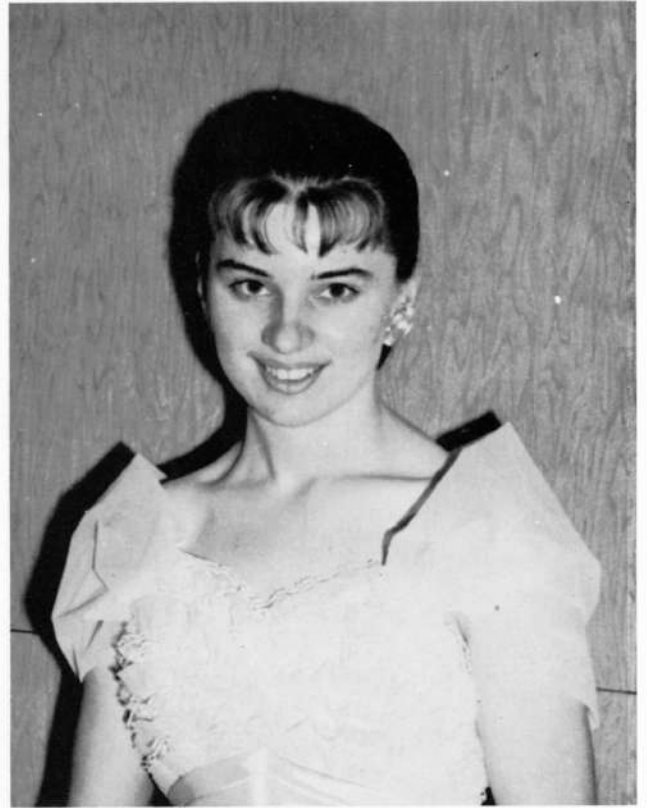


Queen Jeanette I



Senior Princess, Goldie Hodge

Homecoming Princesses



Sophomore Princess, Merrie Jo Jensen



Freshman Princess, Frankie David

The Homecoming Dance for 1960 was held at the Sixes Grange Hall on February 20. The Seniors worked hard to decorate and the dance proved to be a big success.

The Homecoming Dance



Rodney Dunn, Frankie Davids, Charles Hansen, Crown Bearer Brian Phillips, Student Body President Mike Helmken, 1959 Homecoming Queen Patsy Goergen, Flower Girl Donna Goergen, Don Price, Goldie Hodge, Dennis Waldie, and Jeanette Meade.



1959 Queen Patsy Goergen
Crowns Queen Jeanette I.

The Merlyn McNabb Band provided the music for the evening.





Patsy Goergen, 1959 Homecoming Queen, introduces 1960 Homecoming Court to Pacific High Studentbody during a school assembly.



Students pause to purchase tickets and sign guest book.

"Moments to Remember"



The Sweetheart's Ball



King Ken Humphrey and
Queen Lenore Lindsay
preside over the dance.



The Starlight Trio, Ronnie
Carver, Jon McWilliams and
Julie McWilliams, provide
the music.



Senior Princess, Bonnie DeVore
and escort, Ben Neff.



Junior Princess, Sharon Wilson
and escort, Ron Rose.



Freshman Princess, Bonnie Hodge
and escort, Frank Smith

Junior-Senior Banquet

Entering the hall, all went through "the little grass hut of Hawaii" and then on into the dining hall to enjoy a dinner of either ham or turkey. The dining hall and ballroom were decorated with sunset murals done by Shasta Pritchard. The serving Sophomore girls wore sarongs of Hawaiian prints. In the corner of the ballroom was a grass hut matching the one at the entrance. Everyone had a lovely evening of dancing. Kathy Bowman was banquet chairman and Patsy Goergen was dance chairman. Glenn Hensley was co-ordinating chairman.



TOP: Mr. and Mrs. DeMarsh at the head table.

MIDDLE: Mr. Rod McKenzie, the guest speaker

Enjoying a ham or turkey dinner.



Prom

Couples enjoy the atmosphere of a Hawaiian Sunset.



Miss Moyle takes tickets from guests.



The Fred Murray Band

Bunion Alley... No reservations necessary.



Senior Variety Show



UPPER LEFT: Penny Cope, Della Hardin, dancing a Charleston.
UPPER RIGHT: "Doctor" Roy Mollier and his patient Ben Neff.
OPPOSITE: Cowboy Rae Ann Reinke pantomiming "Kansas City".
LOWER LEFT: Rae Ann Reinke and Evelyn Young clown for laughs.
LOWER RIGHT: Master of Ceremonies Arnold Jackson.



The Senior Variety Show played a big part in helping many students take the trip to San Francisco. The show also gave the students a chance to display their talents before the Community.





Ben Luethe and Lorraine Fales develop marshmallow passing skills.



Jim Kosta. Who gets the bottle?



Initiates boost peanuts to the finish line.

Sophomore-Freshmen Initiation



Underclassmen bow low, low to the MIGHTY SENIORS!



Glamour Puss Cope strikes a coy pose.





OCTOBER
Linda Steddom



NOVEMBER
Glenna Churchill



DECEMBER
Goldie Hodge



JANUARY
Judy Kalina

*Girls
of
the
Month*



FEBRUARY
Janice Boice



MARCH
Evelyn Young

Girl of the Year



SEPTEMBER
Rae Ann Reinke

APRIL
Mary Barklow



MAY
Kathy Bowman



Band Concert



ABOVE: Mr. Jensen directs the band through a number. LOWER LEFT: Ronni Carver plays an alto sax solo. LOWER RIGHT: Wilbur Jensen and Lila Tucker previous recipients of the John Phillip Sousa Award, present plaque to Co-winners Mary Kay Barklow and Linda Steddom.

The band concert was a rather special occasion this year as it marks the close of Mr. Jensen's years of service to Pacific High. Mr. Jensen has taught music to the students of this area for twelve years. At the close of the concert, the students present Mr. Jensen with a gift as a minor token of their appreciation for the music guidance he has given them through the years.





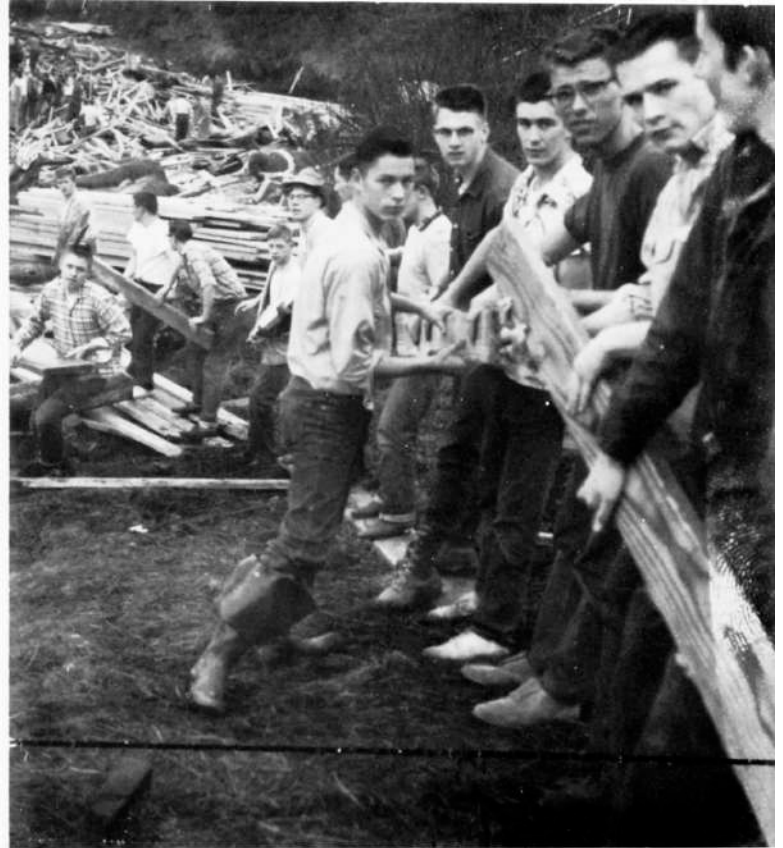
Student Life

Student Life



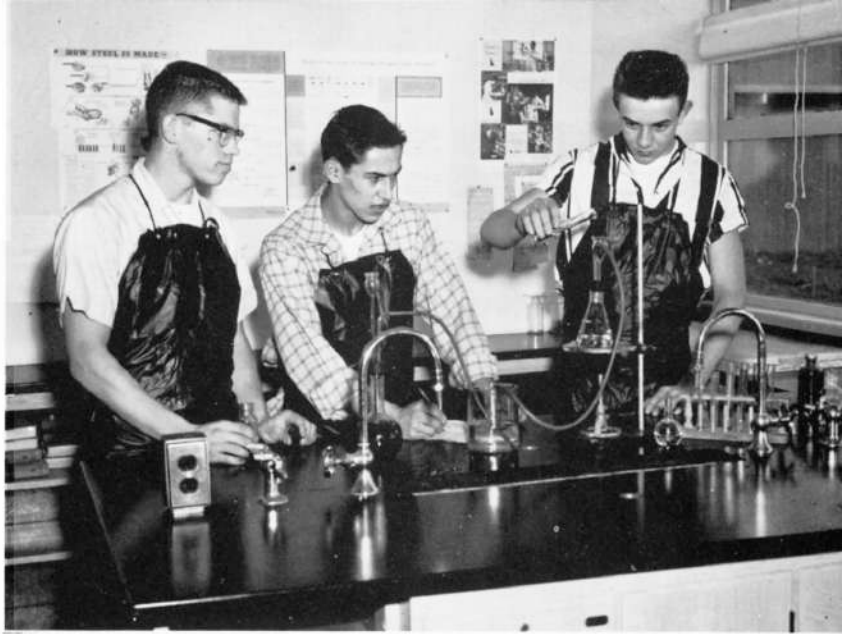
Girls of the Home Economics II class watch as their teacher, Miss Anderson, demonstrates.

Tote that lumber!!! Pacific boys salvaged lumber for bleachers when Port Orford dock went out.



Serpentine winds in and out through Pacific's halls, lashing back at Vikings.

Pacific's Chemistry Class is well known here. Mr. Green instructed students in many worthwhile experiments.



Jackie Myers, the only girl in shop, used her skills in fashioning an attractive cedar chest.

The business minded students could be seen in the typing room improving their skills.



CHEEVER
HARDWARE

Phone 161, Langlois
Hardware and Drygoods

Langlois, Oregon

ALDROPP GARAGE

Towing Service

"A big garage in a small town"
STANDARD PRODUCTS

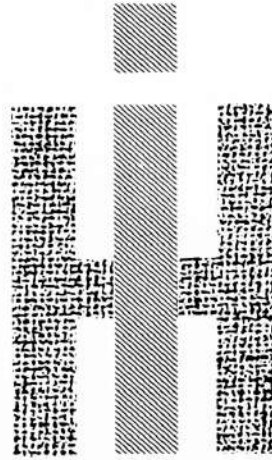
**NOBLE
ELECTRIC**

CONTRACTING
and
WIRING
Langlois, Oregon

DENMARK STORE

Gail & Leona Conaway
Owners

Highway 101
Langlois, Oregon
Phone 812



**FOSTER BROS.
SERVICE**

LOG CABIN CAFE

South of Pacific High

ED 2-3051

CASEY'S APPLIANCE

for

Sales and Service

Port Orford



BAY WAY MARKET
Coos Bay

Keep Cool You Cats
with
GENE'S REFRIGERATION
Air conditioning & Refrigeration
Sales - Service
North Bay Shore Drive
Phone CO 7-2048, Coos Bay



GLEN & LEE'S
Barber Shop
Coquille, Oregon

STILLMAN'S

School work is easier with a good
portable typewriter.

Triangle Feeds
GRIFFITH'S FEED STORE
601 North Central
Coquille, Oregon

Try the new Quiet-Riter "11"
\$5.00 down, \$6.50 per month
286 N. Broadway Coos Bay
(across from the Tioga Hotel entrance)

Y CAFE in Coquille
Homemade Pie

SKELETON

COQUILLE STATIONERY
Coquille, Oregon



SHORE'S

GENERAL TIRE SERVICE

For SAFE human mileage

Beauty Academy

Coos Bay
CO 7-3921

Coquille
8881

Coos Bay, Oregon



YOUR BEST AUTO BUY

BY FAR

** BUICK ** CHEVROLET **

Phone 3201

Second and Adams

Coquille, Oregon

BURR-SULLIVAN, INC.

PAGE LOGGING TRAILERS

the ONLY PLACE to buy

Coquille, Oregon

MATYKA



"Keepsake
Diamonds"

Coquille, Oregon

Atlas Tires

Atlas Batteries

. . . IN COQUILLE



Ed Walker, Dealer

Phone 1331

MODERN

BUILDERS' SUPPLY

P.O. Box 936 Coquille, Oregon

82

Phone 3521

TAYLOR'S **SPORT** SHOP

Fishing Equipment
Hunting Supplies
Hobby Supplies

153 North Central in Coquille

CONSOLIDATED SALES & SERVICE



The Ferguson System
Box 576
Coquille, Oregon

COQUILLE SPORTING GOODS

Fishing tackle

Camping Equipment

Guns and Ammunition



93 N. Central, Coquille, Ore.
Phone 4261

SHORE'S GENERAL TIRE SERVICE

Coos Bay, Oregon

for SAFE human mileage



"FAMILY SHOE CLUB STORE"

SUNBAUM'S

"The latest in footwear"

North Bend, Oregon

SPECIAL

ICE CREAM

Mfd. by CUTLIP'S ICE CREAM CO.,
North Bend, Oregon

BAY T.V. INC.

A - Master Antenna System

The music medium for Family
Entertainment

250 South 2nd Street Coos Bay
Phone CO 7-7061

letter heads envelopes office forms
mill and logging blanks snapout sets
continuous forms

THE NEWS PRESS
Commercial Printing

phone CO 7-4923
140 N. Second Street
Coos Bay, Oregon

DR. ROBERT A. LEY
Optometrist

60 E. Second Street, Coquille
Phone 4931

MERCURY LINCOLN
MG MORRIS AUSTIN-HEALY

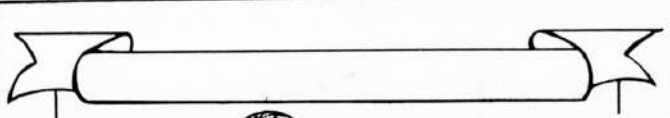
Sales Parts Service

McCLURE

MOTORS

Phone CO 7-3114

540 South Broadway in Coos Bay

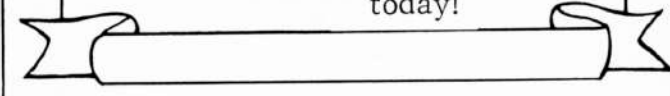


The World

THE ONLY DAILY PAPER
IN
SOUTHWESTERN OREGON

Read.
Your school news
Your local news
International news

Today's
news
today!



BROOKMEAD DAIRY

FOR ALL YOUR DAIRY NEEDS

Call or write Steward Gourley at Paulsen's Motel in Coos Bay

169 N. Second Street

Coos Bay, Oregon

CALL - CO 7-2510 for an appointment
WRITE - P. O. Box 328 for an appointment

PACIFIC OPTICAL LABORATORIES

DISPENSING OPTICIANS

ALWAYS-----the RIGHT price

CHURCH
PONTIAC
A fine car made finer

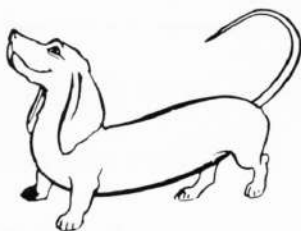
IN
COQUILLE

ALWAYS-----the BEST buy

COQUILLE ANIMAL HOSPITAL

Dr. R. N. Crawford, Veterinarian

Take care of your Pet



Phone 2631 1095 N. Knott, Coquille

RACKLEFF PHARMACY IN COQUILLE



Pure DRUGS

CAREFULLY COMPOUNDED

CAROL'S APPAREL

"For the young at heart."

16 East 1st Coquille Phone 494

SAVE!

at



SLATER'S VARIETY

in Coquille, Oregon

CEDAR POINT PACKING CO

Stock Up!!

with wholesale meats

phone 5051

on the Coos Bay Highway
North of Coquille

STOKES INSURANCE AGENCY

Harold and Alice Stokes

140 N. Ellensburg Avenue
Gold Beach, Oregon

Phone CH 7-4511

STYLE SHOP

Bandon, Oregon

"WE HANDLE
'KANDEL' SWEATERS"
The finest athletic sweaters

MORRIE'S OUTDOOR STORE

Everything for the Sportsman

Phone CHerry 7-893

P.O. Box 855, Gold Beach, Oregon

Morris R. Graves

Owner

"Say it with Flowers"



from
BANDON FLORIST
Phone FI 7-5511

Bandon, Oregon

BUFFINGTON
Motor Co.



Gold Beach, Oregon
CH 7-4141

"Eating out is fun"

Choice Steaks
Sea Foods



"Be at home away from home."

LLOYD'S

For Reservations, phone
FI 7-9951 - Bandon, Oregon

DOUGLAS F. DEVOE

• Realtor Accountant

445 North Ellensburg Avenue

Phone CHerry 7-3332

SINGER SEWING MACHINES

Sales & Service - Parts & Rentals

For all your sewing needs - Look for the

"SINGER" and RED "S"

260 South Broadway

Coos Bay

Phone COngress 7-3715

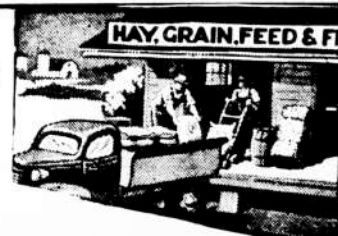


HUGH'S MEATS

Mr. & Mrs. Hugh McNeil, Props.
Bandon, Oregon Ph. FI 7-3542

PANTHER FEED STORE
Farm & Garden

Bandon, Oregon



In Coos Bay

Phone CO 7-2145

LITTRELL SUPPLY CO.

AUTOMOTIVE PARTS AND SHOP EQUIPMENT
304 South 2nd Street

WESTERN AUTO

T. V.
NORGE & WIZARD
APPLIANCES

Auto
Parts

Coquille
Phone 851

North Bend

Coos Bay

Coquille

PURKEY FURNITURE

Home Furniture
Appliances

COQUILLE AUTO CO., INC.

Oldsmobile Rambler

9 E. Main Coquille Phone 121

BUY!

Hardware and Farm Implements
at

J. A. LAMB COMPANY
66 W. 2nd in Coquille

THORNTON TIRE SERVICE

Coquille

U. S. Royal Tires
Specializing in Factory Recapping

370 So. Hall

Phone 270

TITLE GUARANTEE
& ABSTRACT CO.

It pays.....To insure

Commonwealth Title Insurance
295 N. Baxter Coquille Phone 8761

Get complete service at

FRED'S FLYING "A"

184 W. Main

Coquille

GOOD LUCK SENIORS!



from Coquille's

OK BARBERSHOP

87

You get Sales & Service at
 PAPE BROS. inc.
 Caterpillars
 Phone 8301 Coquille, Oregon

Shop Coquille
 LORENZ'S
 for
 Jantzen Sweaters
 Since 1887

See  To  With
 DR. MICHAEL G. CARNEY, Opt.
 172 N. Adams Coquille Phone 821

HARRY'S APPLIANCES
 Maytag
 Sales and Service
 37 W. Main Coquille Phone 821




Safety Conditioned Tires
 North Bend
 TIRE SERVICE

WILLIAMSON'S OUTBOARD SHOP
 Outboard motors
 . . . boats
 . . . aircooled engines
 Coos Bay, Oregon

CHUCK'S flower basket
 gifts and flowers
 for all occasions
 95 1st Street Coquille Phone 1791

McCLARY'S APPLIANCE
 Your Philco Admiral and Amana Dealer
 201 N. Adams Phone 101
 C
O
Q
U
I
L
L
E

245 South Second in Coos Bay
 Phone CO 7-4191
 HANSEN ELECTRIC COMPANY 
 Electrical Contracting

H. T. FORD CO.
 DODGE D
 P h o n e PLYMOUTH A
 VALIANT R
 CO 7-4128
 530 S. Second Street in Coos Bay

CAPPS

FORD Sales and Service

PHONE FI 7-2711

Bandon Oregon



LOOK FOR THE SHELL SIGN



For Dependable Gasoline

Port Orford

Oregon

BANK OF BANDON

Serving Coos and Curry Counties Since 1904

Phone: Fillmore 7-2611

Bandon, Oregon

KEELER'S
McCulloch Saw Shop
Sales and Service

Port Orford

Phone ED 2-3222



for

Major Auto Repair

at

BATTLE ROCK GARAGE

Port Orford

Oregon

EL SERAPE CAFE

Mike and Lupe Harwitz
Proprietors

We specialize in Genuine
MEXICAN FOOD

Highway 101

Port Orford, Oregon



RICKMAN'S

for

BUILDING

MATERIALS

Phone ED 2-3385
Port Orford, Oregon

NORM'S



Port Orford

Oregon



PORT ORFORD RICHFIELD

"Jigs" will
help you!

Towing Service
ED 2-2271

ELK RIVER DAIRY

BEST IN MILK AND DAIRY PRODUCTS

Fresh Eggs
Milk
Cottage Cheese
Orange Drink

Courteous Door to Door Service

Port Orford ED 2-2566



Phone ED 2-3281

Port Orford, Oregon



McKAY'S MARKET

The Friendly Market

Port Orford Oregon

Phone ED 2-2521

first in fashion

WITH

K - Lynn Fashions
Port Orford, Oregon

Diamonds Repair Jewelry

LOGSDON JEWELRY

Port Orford, Oregon

PHILPOTT'S



Flying A Service Station

Port Orford

Oregon

WELLS STATION

"Where the Greyhound Stops"

Sporting Goods
Tackle
Magazines
Candy

Phone ED 2-2371

Port Orford

LOCKSMITH SHOP

Port Orford

Oregon

OPHIR STORE

Lorene Wade

CH 6-2375

Ophir, Ore.

MONTY'S SERVICE

Port Orford, Oregon

Atlas Tires - Tubes

Batteries - and Accessories

Wrecker Service

Phone Day or Night

ED 2-2433



Always friendly service
at your

TEXACO STATION
in
Port Orford

PORT ORFORD VARIETY

Port Orford's Gift Center

Phone ED - 3671

Port Orford, Oregon



PORT ORFORD BEAUTY SALON

Port Orford

Oregon



Stop in at...

BARTLETT'S

Fountain & Lunch
next to the theatre

Homemade
Pies

Dale and
Adella Bartlett

Port Orford



PORT ORFORD

MACHINE SHOP

You'll never go wrong
when you have all
your welding done by
Wayne Thomas. (machine
tool)

ED 2-2033

"The Land of Long Ago!"
PREHISTORIC GARDENS
South of Port Orford

In Langlois

Whalen's

DINE & DANCE



A BANQUET ROOM FOR PARTIES

PORT CLEANERS
free pick up & delivery
Phone ED 2-2022 Port Orford

HAHN'S HARDWARE

Your Home Town Store

in

Port Orford

PACIFIC SUPER MARKET

A Good Place To Buy in Fort Orford

Thrifty
Green
Stamps

CONGRATULATIONS! CLASS OF 1960!

The future belongs to
the youth of today, so
prepare well for tomorrow.....



ELECTRIC CO-OP INC.

THE CURRY CRAFTSMEN

Gifts - Agates
Hand fashioned jewelry

Douglas and Port Orford
Millia Johnson Oregon

PITCH'S

Tavern & Cafe

Port Orford

Oregon



THE
ORFORD'S

Steaks. . .
Seafoods. . .
Cocktails. . .etc

THE BEST FOOD IN TOWN



Port Orford, Oregon

COQUILLE BRANCH

NATIONAL **1**st BANK
of
OREGON

"Let's build OREGON together"

60 extra
Banking hours
per month

LINCOLN BOTTLING CO.



PEPSI-COLA

ROYAL CROWN

FOR A REFRESHING BREAK



PHONE SK 9-4091

WASH & SHERIDAN, NORTHBEND, OREGON

WILSON'S DISTRIBUTING SERVICE

UNION OIL AND FIRESTONE PRODUCTS

Gold Beach, Oregon

Phone

CH 7-4332

ED 3511

96

LASSELL'S

FAMILY



SHOES

CH 7-3205

365 N. Ellensburg

Gold Beach, Oregon

Red Goose

King's Way

Yannigan

Grace Walker

Gems

John C. Roberts

Cal Debs

First National Bank of Oregon

Port Orford Branch

Save for a brighter future

Save with First National



Best Wishes To The
class of 1960

THE BARBER SHOP

Next to the First National Bank

Port Orford

Oregon

SIXES STORE

General Merchandise

Phone ED 2-2201 Sixes, Oregon

Best Of Luck, Pirates

CALLISON'S EVERGREENS

Highway 101

North of Port Orford, Oregon

SUSIE'S
STORE

Phone ED 2-3757

Elk River Road, Port Orford

TUCKER'S
MARKET



plenty of parking space behind
the store

Highway 101 - South - Port Orford

SEVEY & TAYLOR

Plumbing Service

Phone CH 7-4533

Gold Beach

DUNN'S MEN'S STORE

252 S. Broadway

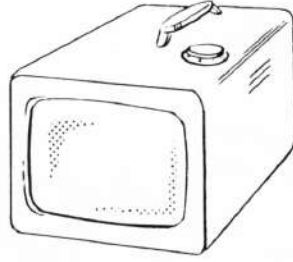
Coos Bay

95

THORNTON'S

FOR COLLEGE —
A PORTABLE

Appliances
Television



FI 7-5351

Bandon, Oregon

"Eating out is fun"



SUNSET INN
(An Inn Worthwhile)

Gold Beach, Oregon

Box 204

CH 7-3121



There are **A · B · C's**
in clothing too . . .

Always be sure of style in your garments whether its for casual, street, or evening wear.

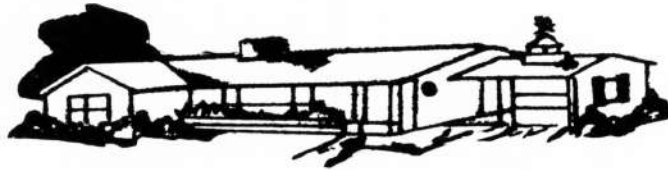
Buy for quality so your clothing dollar goes farther.

Carefully select quality garments at budget prices and you can't go wrong!

**GOLDEN
RULE**

Bandon, Oregon

Phone FI 7-5481



SOUTH COAST AGENCY

REAL ESTATE

Homes
Businesses
Acreages

Port Orford, Oregon

INSURANCE

Truck
Auto
Home

Phone ED 2-3241

Home owned and operated by

Andy & Emily Anderson

**Western Auto
Associate Store**

145 Ellensburg Street

Gold Beach, Oregon

Phone CHerry 7-4693



**TITLE
GUARANTEE
&
ABSTRACT CO.**

P.O. BOX 672
Gold Beach, Oregon

DR. DON R. HAYLOR JR.

Optometrist

Phone CO 7-4224

147 S. Third

Coos Bay

COOS BAY AUTO ELECTRIC

594 S. Broadway, Coos Bay

Phone CO 7-4188

Night - SK 9-6863

CHAMBERS HEATING, PLUMBING
& FUEL OIL

282 S. 2nd, Coos Bay, Oregon

Phone CO 7-6616

Feeds-Seeds-Fertilizers

EATON'S GARDEN SUPPLY

226 S. 2nd, Coos Bay, Oregon, CO 7-4723

Alber's Feed

Index

- ALLEN, Donald 30, 40, 52
 ALLEN, Gene 38, 22
 ALLEN, Keith 27

 BABB, Karmen 30, 41
 BABB, Ronald 12
 BACK, Paul 27
 BALZER, Theda 22, 41, 42
 BARR, Patricia 30
 BARKLOW, Mary K 11, 39, 41, 60, 19, 75, 76
 BARTLETT, Robert 30, 36, 45, 52, 56
 BATES, William 31, 52
 BAUMAN, Rebecca 22
 BELL, Elizabeth 22, 42
 BENNETT, Mary Sue 23, 37
 BLAGDEN, Freddie 21
 BOGGIE, Gerald 27
 BOICE, Janice 5, 11, 36, 41, 42, 61, 75
 BOWMAN, Kathy 23, 37, 39, 42, 61, 75
 BOWMAN, Larry 31, 38, 44, 45, 46, 52
 BROWN, Dave 12, 54
 BROWN, Ray 23, 40
 BURT, Candice 27, 31, 41
 BUSS, Dana 41, 39, 31
 BUSS, Vicki 26, 27, 61
 BYERS, Clarence 31, 45, 52, 56

 CANNON, Jerry 22, 23, 40, 52
 CARPENTER, John 31
 CARPENTER, Mary Jo 23
 CARVER, Patricia 30, 31, 37, 61
 CARVER, Ronni 26, 27, 36, 61, 68, 76
 CHASE, Ira 31, 38, 44, 45, 46, 52, 56
 CHRISTENSON, James 27
 CHURCH, Judy 27
 CHURCH, Mary 31
 CHURCHILL, Glenna 12, 18, 37, 39, 74
 CHURCHILL, Merle 27, 62
 COLSON, Dan 12
 COLSON, Linda 23, 41
 COLSON, Virginia 31, 41
 COOK, Dan 40, 27
 COPE, Penny 30, 31, 37, 39, 61, 62
 COUCH, Dean 23, 48, 58, 59
 COX, Jon 10, 12, 38, 47, 19
 CROMWELL, Sharon 27
 CROSE, Janice 23, 42
 CUATT, Virginia 27, 41

 DAHL, Dolores 12
 DAHRENS, Sherry 27, 39
 DAVID, Frankie 31, 39, 65, 66
 DAVIS, Fred 12, 54, 62
 DEMING, Craig 31, 45, 52
 DENN, Dale 27, 38, 44, 47
 DeVORE, Bonnie 13, 19, 41, 42, 69
 DOUGHERTY, Kitty 27, 37, 73
 DUNN, Rodney 30, 31, 38, 44, 46, 52, 56, 66
 DWIRE, Edward 8, 13, 40
 DWIRE, George 13, 40
 DYKES, Marilyn 27, 37
 ELLIS, Judy 27, 41

 ELLSWORTH, James 62, 23, 48
 EVEREST, Fran 23, 36, 41, 42, 60

 FALES, Lorraine 27, 73
 FARRIER, Marji 13, 39, 42
 FLEETWOOD, Johnnie 23
 FLOWERS, Joyce 13, 42
 FROST, Gayle 27, 41
 FULLER, Ann 23

 GEER, Donna 23, 41
 GOERGEN, Patricia 22, 23, 60, 66
 GOODHUE, Dee 23
 GUSTAFSON, Carol 27, 37, 44, 61
 GUSTAFSON, James 13, 38, 46, 48
 GUZMAN, Judy 31, 41

 HAIGHT, Leonard 13, 38, 46, 48
 HAIGHT, Lester 27, 40
 HANSEN, Charles 26, 27, 36, 52, 58, 66
 HANSEN, Judy 13, 37, 39, 42
 HANSON, Edward 31, 40
 HARDIN, Della 14, 39, 42
 HARRIS, Carolyn 23, 62
 HATMAKER, James 26, 27, 40
 HATMAKER, Rosalie 14, 39, 41
 HATMAKER, Ruby 27, 41
 HAYDEN, Gene 23
 HELMKEN, Michael 14, 19, 36, 48, 66
 HENDRICKSON, Leah 28
 HENSLEY, Glenn 22, 23, 36, 37, 54
 HILL, Donald 27, 38, 44, 46, 52
 HINTHARNE, Mike 28
 HODGE, Bonnie 31, 41, 69
 HODGE, Goldie 14, 19, 39, 41, 42, 62, 65, 66, 74
 HOUGLUM, Darrel 14, 54
 HOUGLUM, Linda 28, 37
 HUBBARD, Jim 24, 62
 HUBBELL, Larry 24
 HUMPHREY, Kenny 28, 68
 HURET, Richard 31

 ISENHART, Henry 24, 40, 54, 55, 62
 ISENHART, John 14, 19, 38, 40, 44, 47, 54, 55, 56, 58, 59, 62

 JACKSON, Arnold 10, 14, 18, 36, 37, 38, 44, 46, 54, 56, 62
 JENSEN, Klaus 31, 45, 52, 54
 JENSEN, Merrie Jo 26, 28, 65
 JERDE, Sandra 28, 41, 73
 JOHNSON, Eric 24, 38, 44, 47, 48, 51, 56, 58, 59
 JOHNSON, Dennis 31, 52
 JOHNSON, Douglas 28, 52, 58
 JOHNSON, Priscilla 15, 37, 39, 41, 42
 JONES, Marvin 32, 52
 JONES, Verlin 32

 * KALINA, Judy 15, 18, 37, 39, 42, 74
 KENNEDY, Loney 28, 44, 52, 56, 73
 KIGHT, Jerry 15, 38, 44, 46, 56, 62
 KIGHT, Susan 32, 41

KLINNER, Dale	28, 62	ROBISON, Daryl	29, 52, 56, 62
KLINNER, Gary	28, 54, 62	ROBISON, Delmer	29
KNUTSON, Gordon	28, 58	*ROBISON, Kay	17, 37, 39, 42
KNUTSON, Lila	24	ROBBINS, Bruce	32
KOSTA, James	28, 73	ROBBINS, Terry	29
KRICK, Delores	32	ROBERTS, Ronald	32, 40, 45, 52
		ROGERS, Ruth	29, 41
LANG, Dale	15, 54, 62	ROSE, Ron	25, 38, 47, 48, 41, 69
LANG, Elaine	28	RUNDBERG, Kenneth	29, 52, 56
LANG, Virginia	24, 42, 62		
LESTER, Eddy	26, 28	SABIN, Rod	33, 40, 45, 52
LESTER, Rodney	40, 32	SEQUINE, Larry	33, 58
LIBBY, Roy	15, 40	SEVERNS, Jim	29, 52, 58
LIBBY, Nanine	32, 41, 62	SHAW, Connie	29
LINDSAY, Judy	32	SMITH, Frank	30, 52, 69
LINDSAY, Lenore	28, 41, 68	SMITH, Glenn	25
LITTRELL, Margie	24, 42	SMITH, Jerry	33, 40, 45, 52
LOWE, Raymond	28	SMITH, K. C.	25
LOWER, Razetta	32	SMITH, Larry	25, 38, 44, 46
LUETHE, Ben	26, 28, 38, 44, 46, 48, 49, 50, 58, 59, 73	SMITH, Marcella	29
LUETHE, Paula	15, 41	SMITH, Marilyn	33, 41
		SMITH, Starr	25, 42
MAHAFFE, Jim	28, 52, 58	SMITH, Willis	33
MANICKE, Raymond	32, 52	STEDDOM, Kay	29, 37, 39, 61
MANICKE, Richard	15, 38, 48, 50, 62	STEDDOM, Laurel	33, 39, 41
MARLOW, Cheryl	32, 39, 41	STEDDOM, Linda	17, 39, 40, 41, 42, 60, 74, 76
MARTIN, Roy	24, 40	STILTS, Carolyn	25, 42
MATHIESON, Thalia	28	STORM, Jack	25
MAY, Donald	28	STORM, Mike	25
MEADE, Jeanette	24, 37, 64, 66	STORM, Marvin	29
MILLER, Charles	15	STRAUSER, Jerry	33, 54
MILLER, Dewey	16, 38, 44, 47, 54, 55, 62	STREETS, Wayne	33, 52
MILLER, Johnnie	28	STRIEBL, Starleen	29, 41
MILLER, Karole	32, 41	SULLIVAN, Louise	29, 41
MILLER, Marilyn	32, 39, 41	SWEET, Bill	25
MILLER, Steven	24		
MITCHELL, Ellen	16, 37, 39, 41, 42, 62	TAYLOR, Elaine	33
MITCHELL, Rosa	37, 28, 39, 41, 73	THOMAS, Wanda	25, 41
MOLLIER, Roy	10, 16, 38, 44, 46, 48, 50, 62, 19, 79	THRONBURG, Richard	33, 40, 44, 47, 52
MOLTHU, Tom	24, 38, 44, 47, 54, 62	TOPE, Chris	33, 45, 52
MYERS, Jacqueline	24, 79	TUCKER, Lee	25, 38, 40, 44, 46, 54, 56, 58, 59, 62
McALLISTER, Oscar	16, 62, 79	TURNER Linda	33, 41
McALLISTER, Shirley	28		
McGOWAN, Richard	32, 45	WAGNER, Price	29, 40, 52
McWILLIAMS, Jon	16, 18, 37, 38, 44, 47, 48, 50, 56, 62, 68, 79	WAHL, Jim	29, 38, 44, 47, 58
McWILLIAMS, Julie	32, 39, 61, 68	WALDIE, Dennis	25, 66
NEFF, Ben	10, 16, 18, 36, 38, 48, 49, 51, 62, 69, 79	WALDIE, Randy	33, 45
NELSON, Robert	24	WALLACE, Shirley	33
NICKERSON, Donna	28	WARDRIE, Robert	29
NOAH, June	29, 39	WATERMAN, Mike	17, 38, 48
OLSEN, Corky	32, 52	WELLS, Connie	33, 39, 41
OSTRANDER, Royal	24	WELLS, Yvonne	29, 41
		WEST, Anne	25, 41, 42
PARIS, Phil	24, 36, 38, 48, 49, 51, 56, 58, 59	WEST, Gale	33
PEMBERTHY, Richard	16, 40	WIECHMAN Adella	29, 41
PENDERGRASS, Perry	24	WHALEN, Beth	17
PETERSON, Fred	24, 38, 44, 46	WHITE, Carroll	29, 37, 39, 41
PLATT, Gary	10, 16, 18, 54, 56	WHITE, Jo	33, 37
PRATT, Raymond	24, 38, 48	WILSON, Jerry	33, 52, 54
PRICE, Don	17, 66	WILSON, Marsha	25
PRESTON, Susan	32, 37	WILSON Sharon	22, 25, 37, 61, 69
PRITCHARD, Shasta	22, 25, 36, 37	WILSON, Bill	29
		WOLTRING, Diane	33
READ, Barbara	32, 41	WOODWORTH, Ron	29, 40
REINKE, Rae Ann	17, 18, 37, 39, 75	WOODWORTH, Terry	25, 39, 41, 42
REINKE, Robert	32, 38, 44, 52	WRIGHT, Russ	30, 33, 36, 38, 44, 45, 47, 52
		*YOUNG, Evelyn	17, 18, 37, 39, 42, 74
		ZABROSKI, Frank	25, 52, 62
		ZABROSKI, Helene	29, 37, 56

