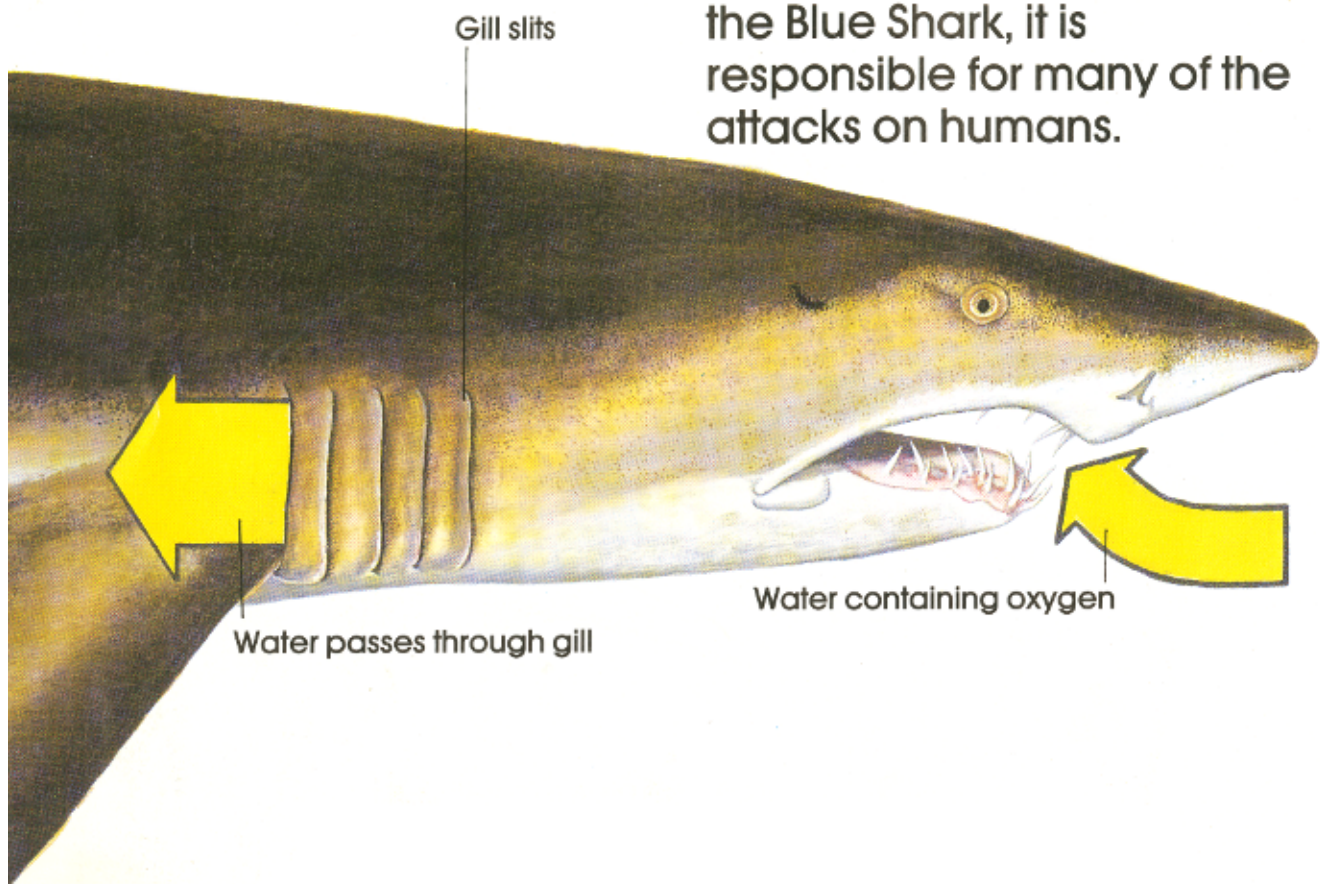
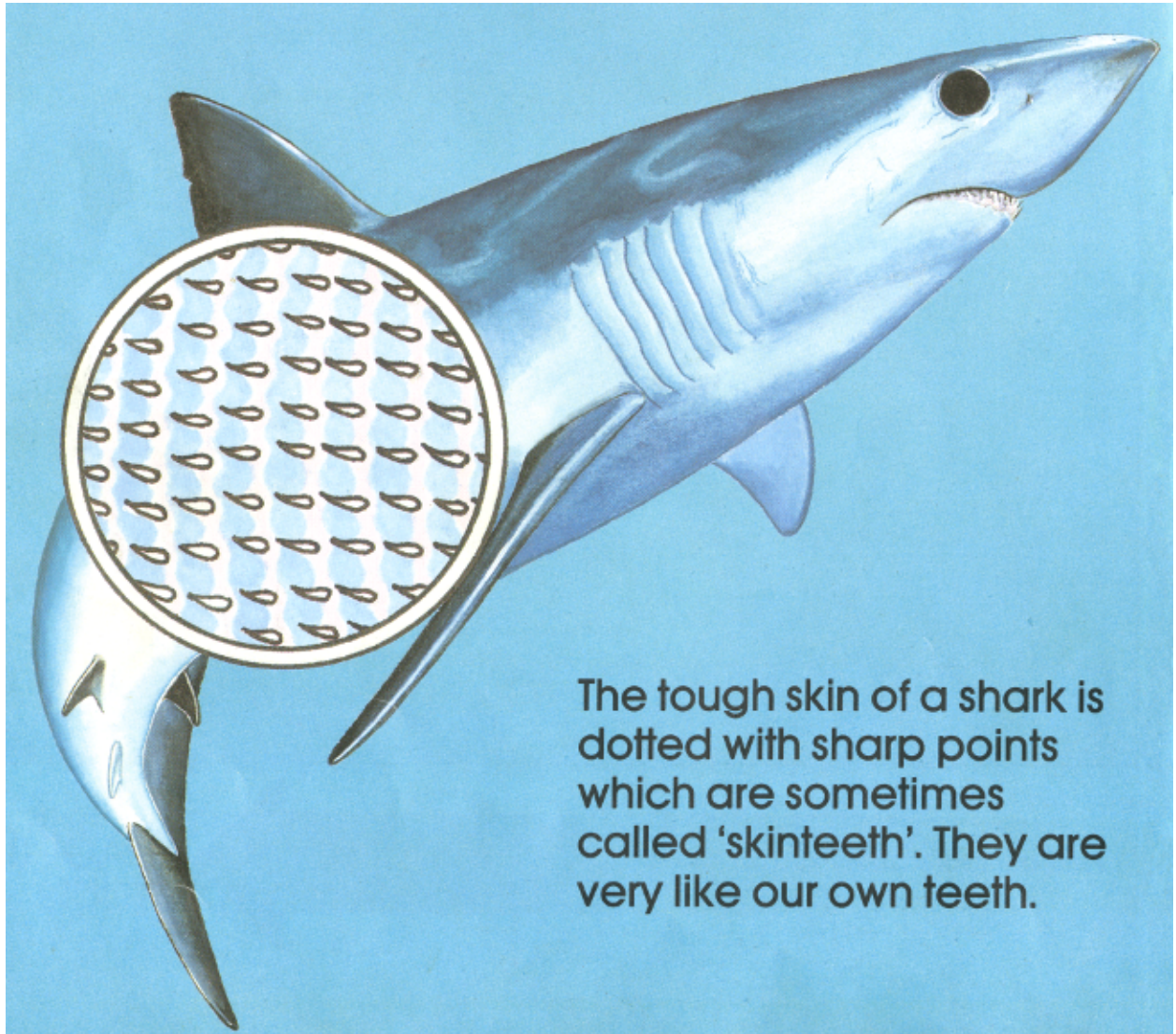


The graceful Blue Shark is one of the most common sharks. It swims in most warm oceans, feeding on large shoals of fish. Many attacks on humans have been by Blue Sharks.

This White-tip Shark is very common in open seas. Like the Blue Shark, it is responsible for many of the attacks on humans.





The tough skin of a shark is dotted with sharp points which are sometimes called 'skintooths'. They are very like our own teeth.



Jaws of a Tiger Shark



Sharks have dozens of teeth in their jaws. Only the front row is used. The reserve teeth move forward to replace worn or lost teeth.



Replacement tooth fills hole



**Do all sharks  
have the same  
kind of teeth?**

The shape of a shark's teeth depends on the food it eats. The Port Jackson has flat teeth for crushing shellfish. The Great White has shearing teeth to tear chunks of dolphin or sea lion. Giant sharks have tiny teeth.



Lemon



Great White



Tiger



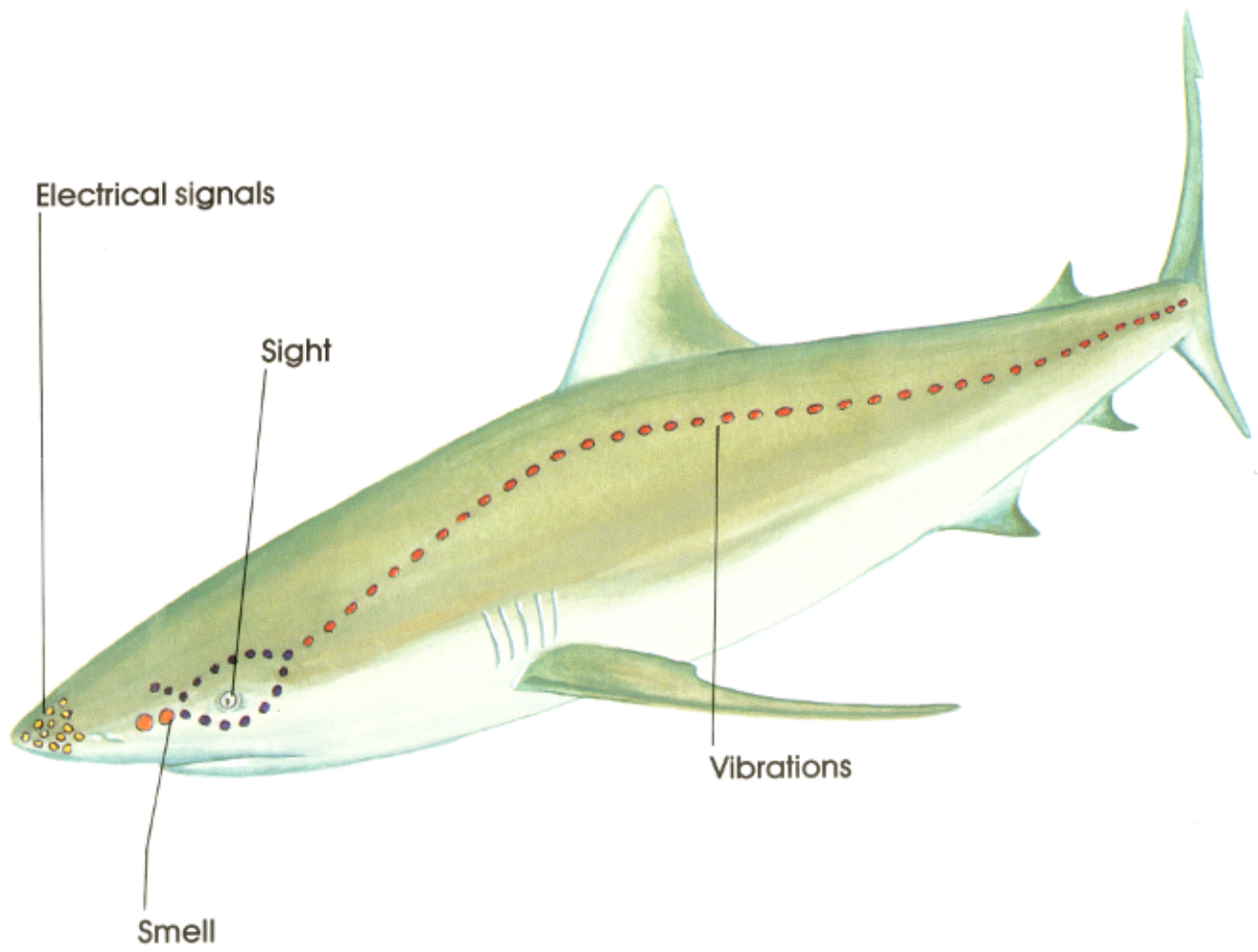
Blue



Port Jackson

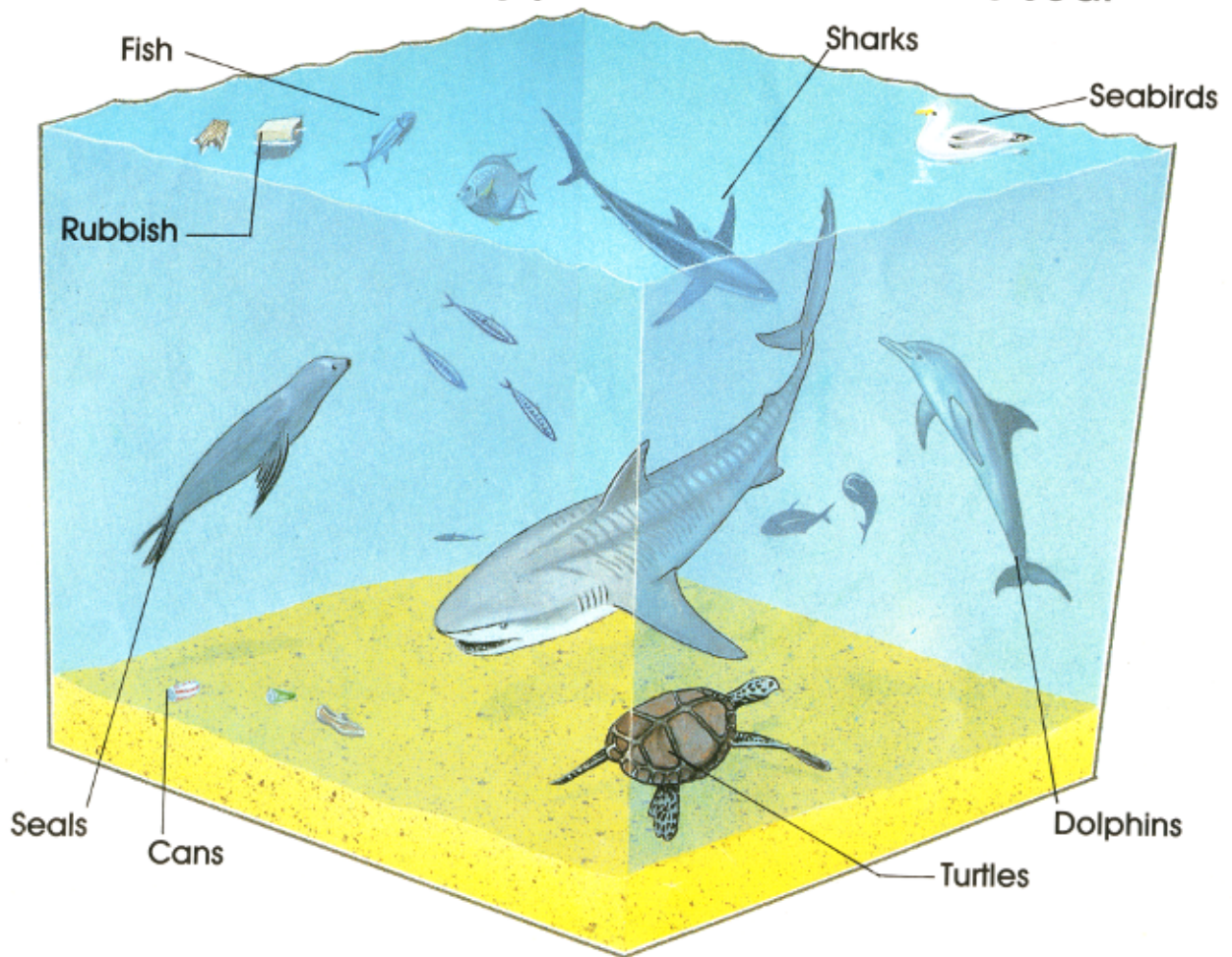


Nurse



This is what a Tiger Shark  
might eat. Not surprisingly,

it has been called  
the dustbin of the sea!







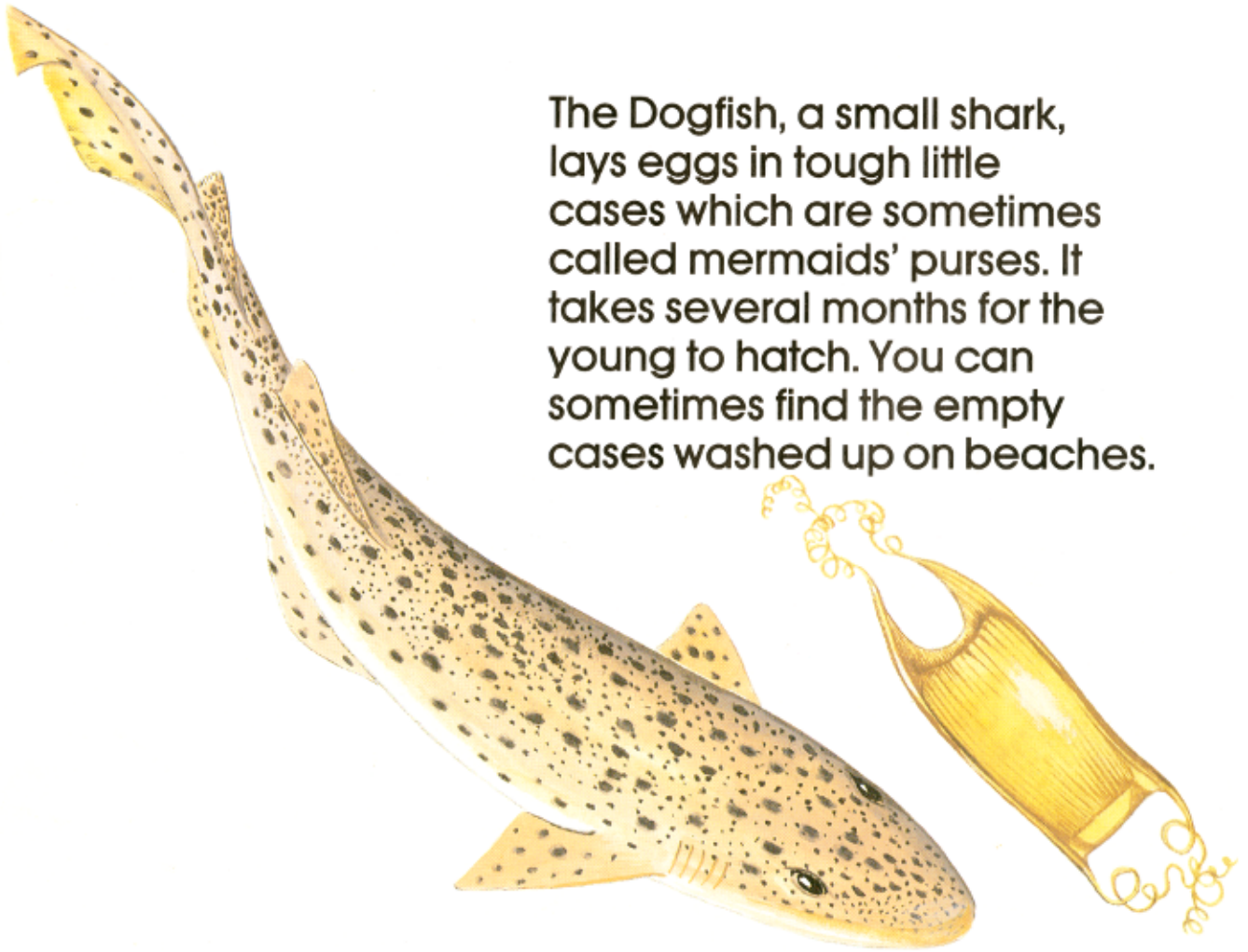
## **What is a 'feeding frenzy'?**

Sometimes, several sharks go for the same prey and the sharks go crazy. They twist and turn wildly, biting anything that moves, including each other!

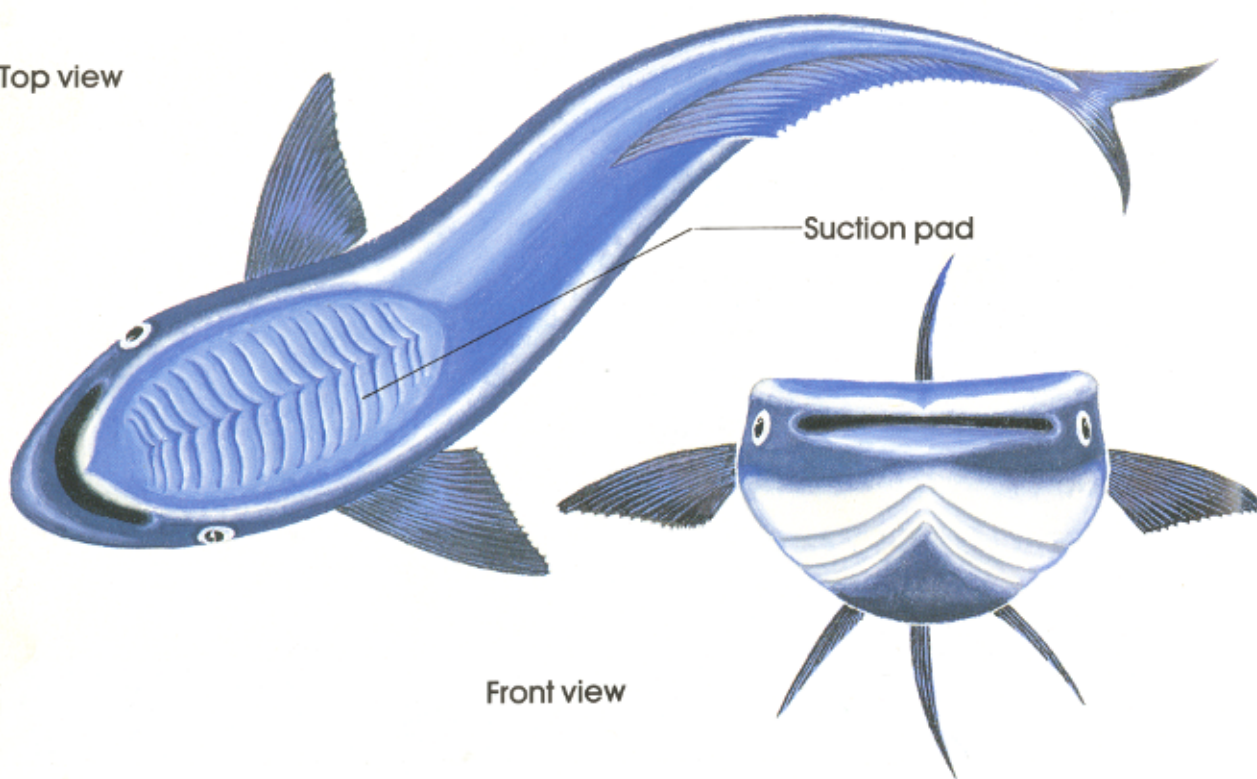




The Dogfish, a small shark, lays eggs in tough little cases which are sometimes called mermaids' purses. It takes several months for the young to hatch. You can sometimes find the empty cases washed up on beaches.



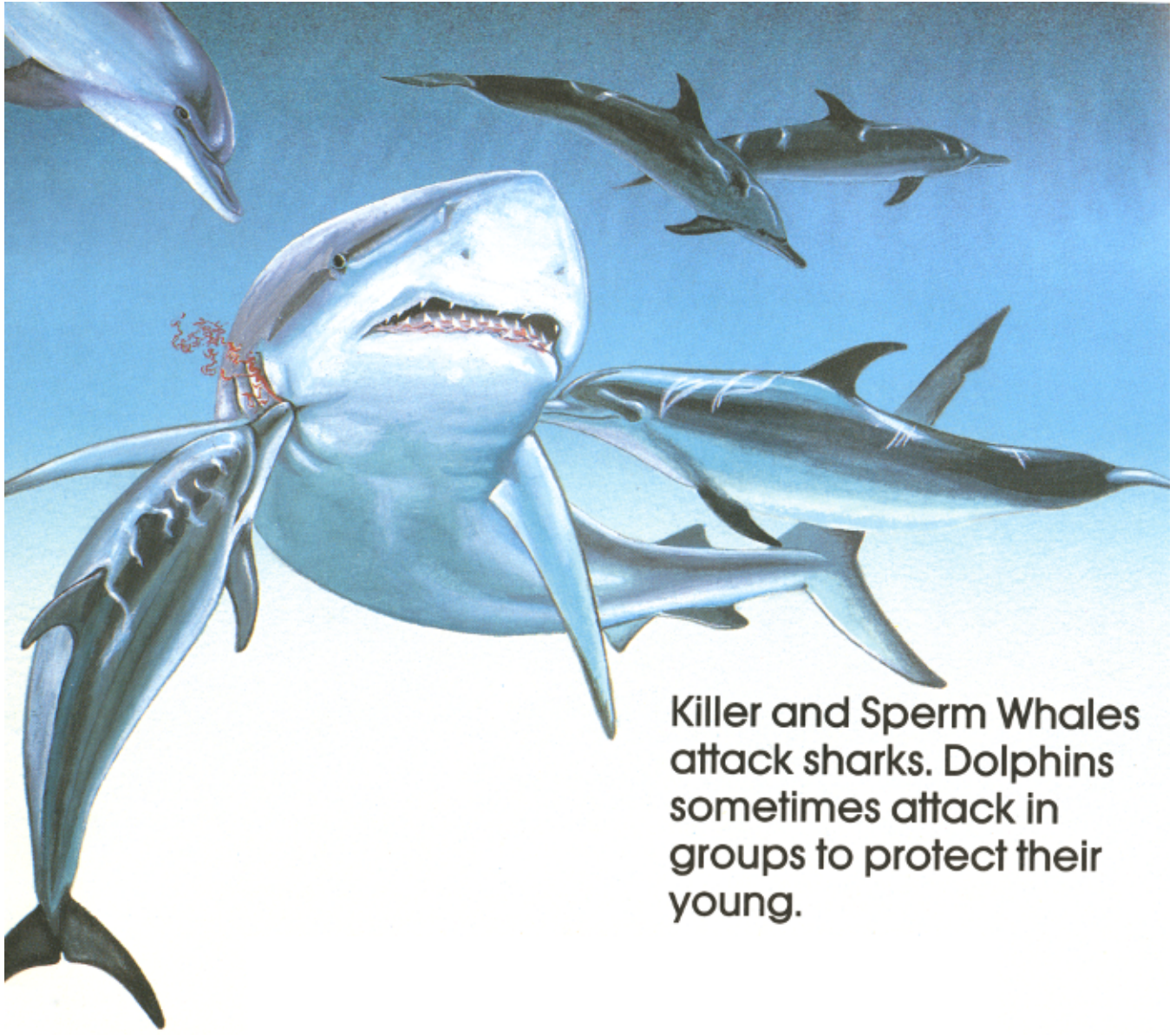
Top view



Suction pad

Front view

A Remora with suction pad



Killer and Sperm Whales  
attack sharks. Dolphins  
sometimes attack in  
groups to protect their  
young.





**Which shark  
is most  
dangerous to  
humans?**

Only about 27 of the 350 species of shark have been known to attack humans. The most feared is probably the Great White Shark. Next would be the Tiger Shark and the Bull Sharks.

The Great White

